



Hangzhou International School  
杭州国际学校



# The New HIS Campus

Sept 2019

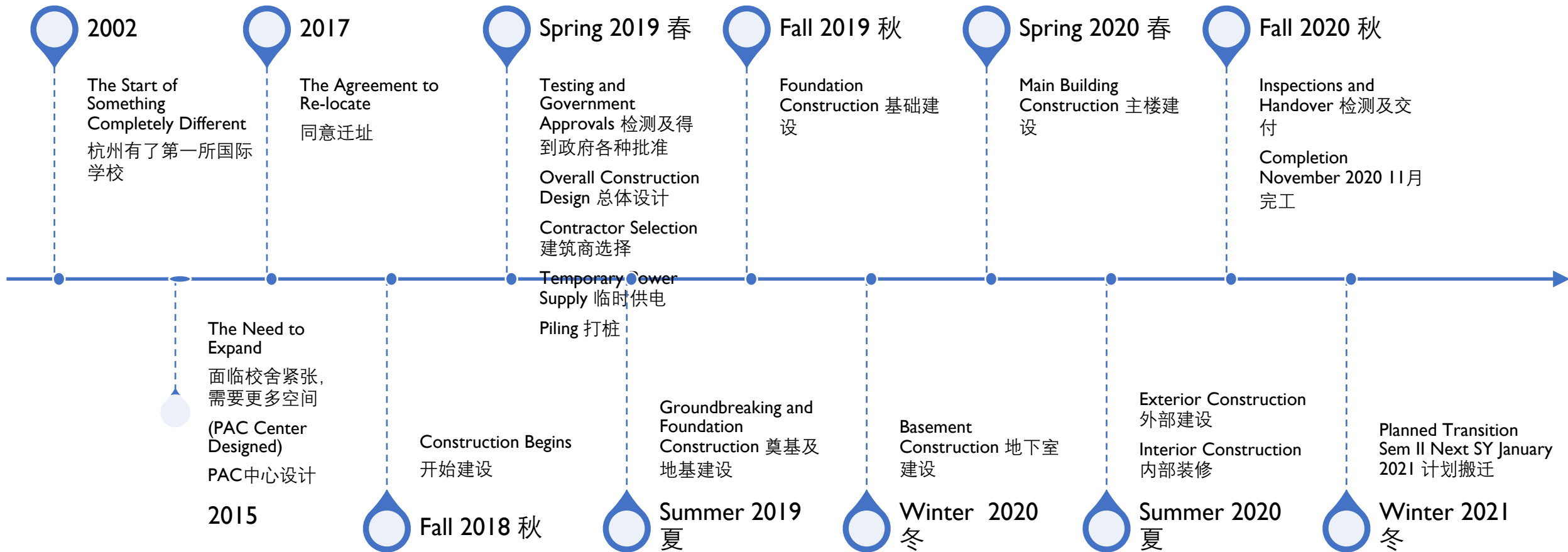
杭州国际学校新校区展示会



# Welcome

- The History and Future  
历史和未来
- The Location 地址
- The Brief 简介
- The Challenges and  
Opportunities 挑战与机遇
- The Latest Schematic Designs  
最新的示意图
- Q & A 问答

# A Little History...





**The Location...**  
**@Yincui and Huxi Roads**  
**Baimahu (White Horse Lake)**  
**Binjiang District**

地址：映翠路和湖西路口西北角







The Location...  
Parks



# The Location...

## Canals





# The Location...

## Canals Straightened





# The Location... Mountains







**More Mountains...**

# The Location...

The New Land: 70 MU (approx.  
50,000m<sup>2</sup>)

Current Land is 30 MU (approx. 20,000m<sup>2</sup>)

新校区70亩 (大约50,000平方米)

现在是30亩 (大约20,000平方米)

## Mandated Challenges:

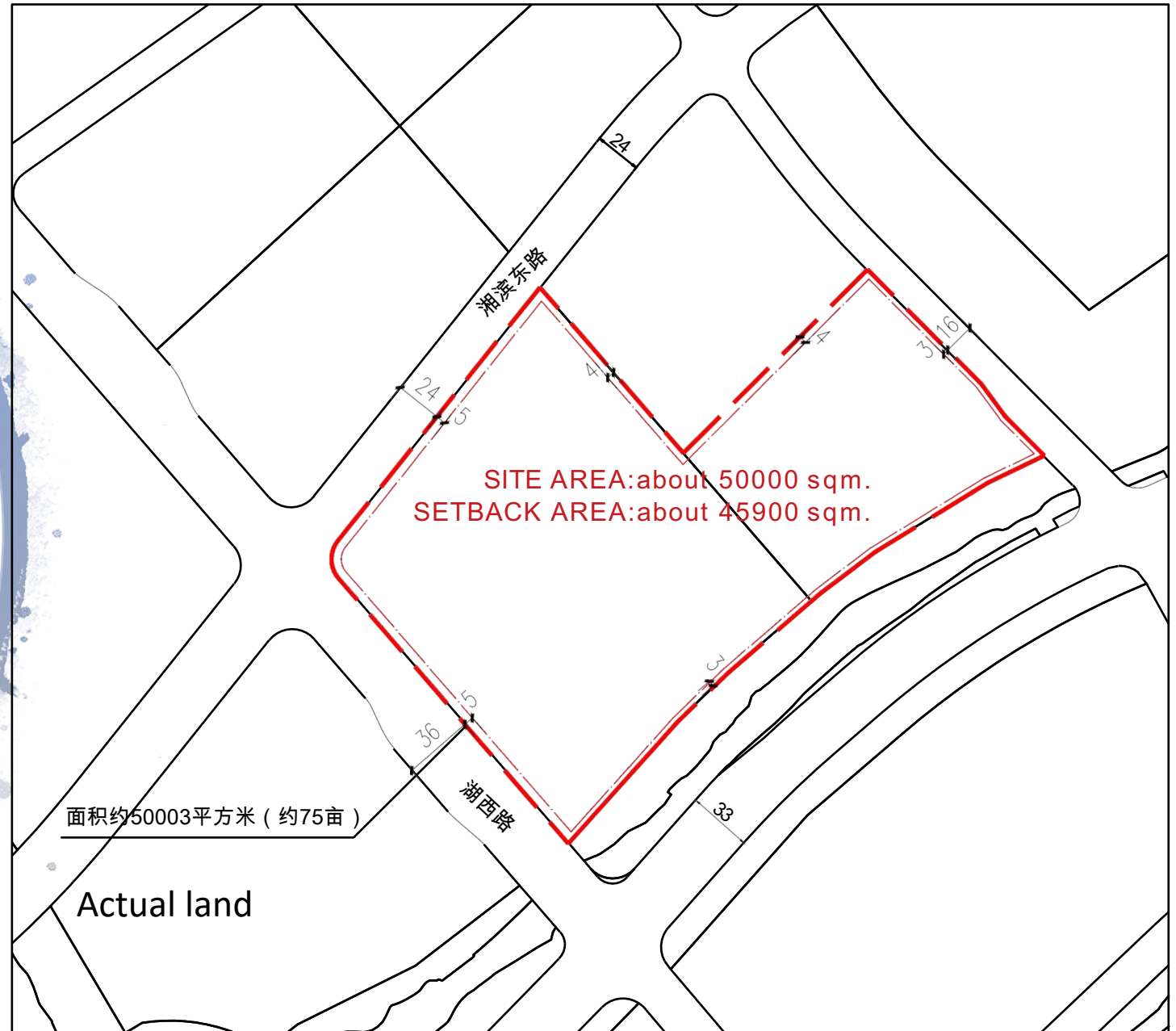
1/3 Green space, parking, setback and fire lanes, orientation, access, building density, plot ratio, and building heights.

强制性的挑战：绿地面积要占1/3，还有停车场，围栏，消防通道，容积率，建筑高度

## Opportunities:

Design for future needs, use of space, flow of people, acoustics, colors, flooring, environments.

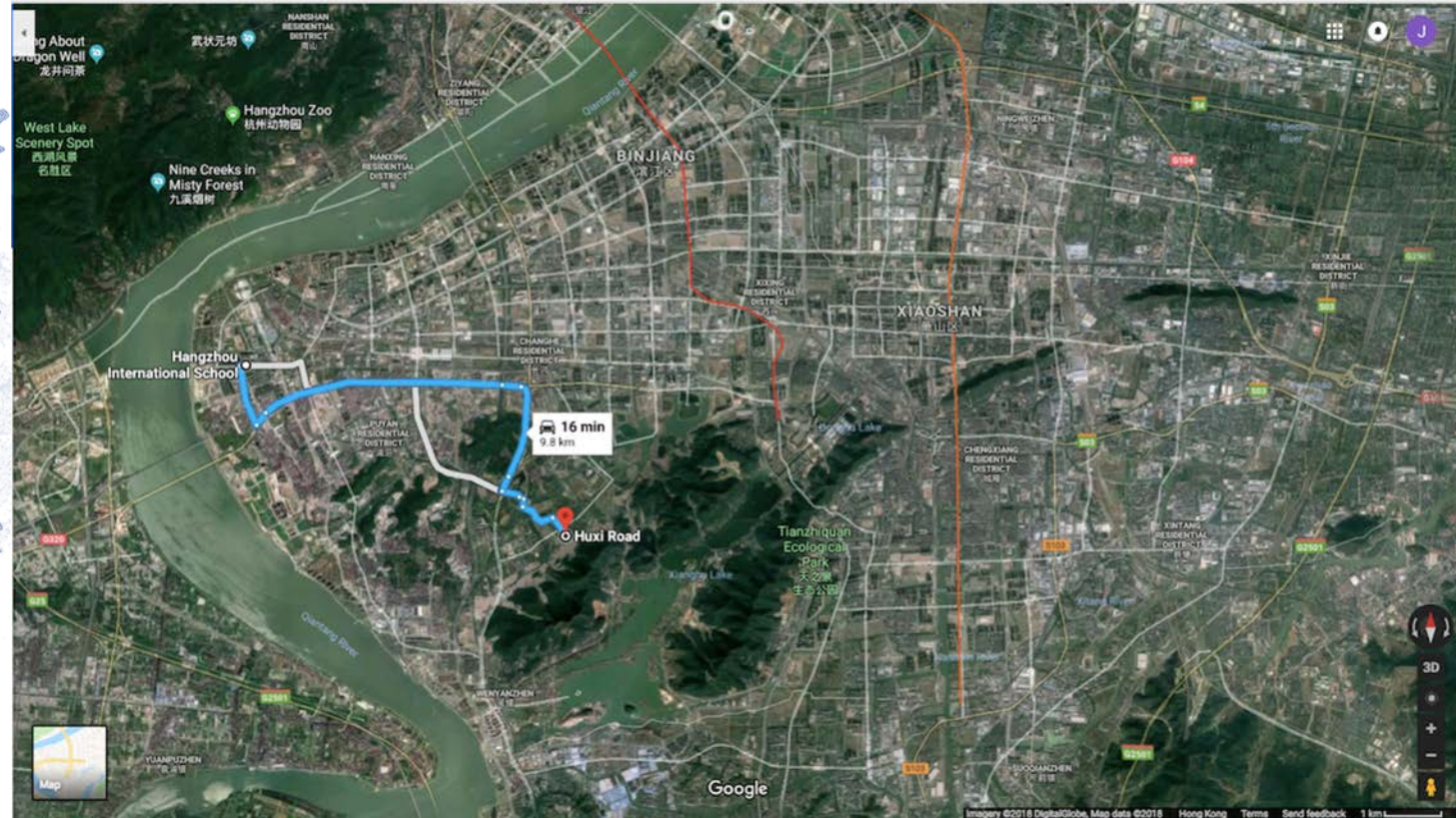
机遇：为了未来而设计地场地，以人为本，声音，颜色，地板，环境融为一体。





# The Location...

- About 12-20 minutes by car from current location
- 12-20分钟的车程
- About 2 hour walk (3 hours over the mountain)
- 2个小时走路或3个小时爬山
- Auto transport likely to be more consistent at 15 minutes w/ new roads
- 按现在的规划，随着新的道路/公交车的通行，到地铁站应该是15分钟左右。





# New Housing Developments in Area 周边也有新 的小区在慢慢建成





# The Opportunities...

## Most Essentials will not Change:最基本的坚持不变


- Vision and Mission 学校的愿景不变
- General Learning Targets 学习目标不变
- IB Commitment IB课程不变
- International School in China Context 中文涵盖不变
- Small Class Size Ratios 小班化不变
- Highest Quality Teachers 高素质的老师不变
- Dragon Spirit 龙的精神不变
- Commitment to Safety and Security of Students 为学生创造安全的环境不变



# HIS will Maintain its Unique Identity

## HIS会维持的独特性

- Community-Centered and Inclusive 以社区为中心
- IB World School IB学校
- University Preparation 为升大学作准备
- Strong Opportunities in Academics, Arts, and Athletics 为学生提供最好的学业，艺术和运动的机会
- Promoting International-Mindedness & Multilingualism 提倡国际视野
- Celebrating Diversity while Promoting Unity 培养独特性的同时发展多样性
- Celebrating Host Country Language and Culture 感恩中国文化和语言
- Targeting Individual Learning Needs 注重个人需求
- Caring Supportive Environment 关心发展环境



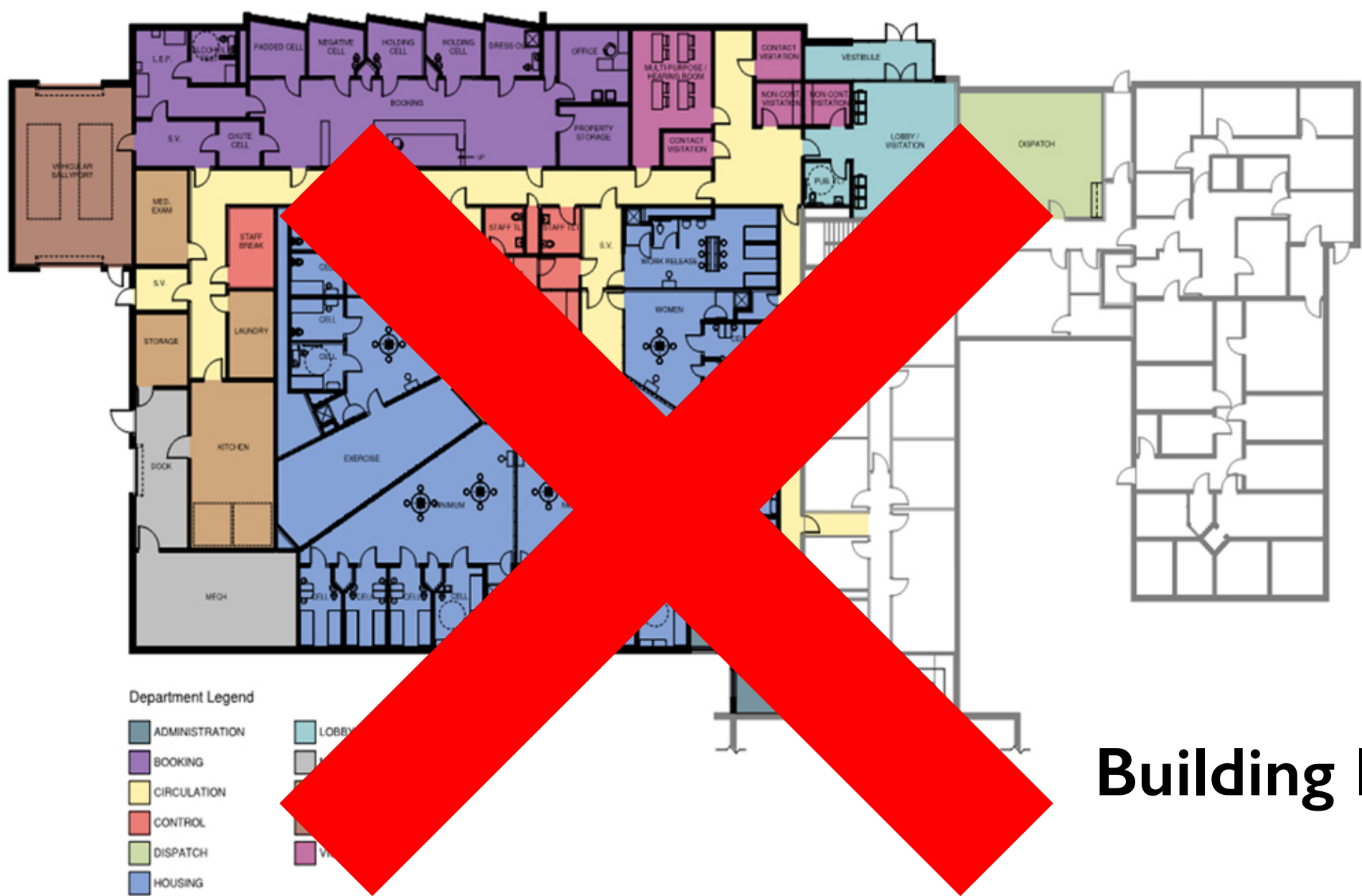
# Some Positive Changes to Look Forward to... 值得期待的改变

- SPACE!!! 空间！！！！
- World Class Theater and Black Box 一流的表演舞台和“黑盒子”
- Swimming Pool 游泳池
- Two Full-sized 7-a-side Soccer Pitches 2个7人制的足球场
- 3-4 Full-sized Basketball and Volleyball Courts 3-4个篮球场和排球场
- Design and Innovation Centers 设计和创新中心
- Purpose-built Facilities 以目的来设计的设施
- Expansion to Medium-sized school (more academic, arts, and athletics programs) 更多的课程设置
- Targeting Individual Learning Needs 专注个人学习培养
- Caring Supportive Environment 充满关爱的环境
- Canal Boating! 划船！
- Purposeful Divisions and Orientation 分区块运作
- View of Mountains and Canals, not Star Wars Building 抬眼可见青山绿水，而不是星球大战里的房子
- SPACE!!! 空间！！！！

# ARRANGEMENT OF CLASSROOMS







# Building Layout

# The 21<sup>st</sup> C Learner is . . .





- **FLOW and BREAKOUT SPACE**
- 有流动性又有区隔的空间





# DESIGN CENTERS

## 设计中心









- ATTRACTIVE MULTIPURPOSE  
ENTRANCE HALLS and FOYERS
- 吸引人眼球的多功能活动区域







Attractive Gardens and  
Outdoor Inquiry Spaces...  
Butterfly Garden? 公园，户外  
探索活动场地，蝴蝶园？





600-650 Seat Theater 可容纳600-650人的剧院





# Black Box Theater Connected to Exhibition Hall 黑盒子剧院以及会展中心

---







Swimming Pool 6-Lanes 25m 6道25米的游泳池







Open Cafeteria 开放式的餐厅





# Purpose Built Libraries

## 图书馆





Connecting Café 咖啡厅



# Purpose-Built Breakout Learning and Common Areas

## 学生的学习空间

---







Early Childhood



Schools



School-Age Playgrounds



Fitness & Wellness

Outdoor Playgrounds  
and Fitness Circuit  
户外的活动空间



# The Brief...

## General 总述

Design for 1300 Students (4-5  
Classes per Grade Level)  
设计可容纳1300名学生（每个  
年级4-5个班）

Merge International w/  
Traditional and Modern China  
Features  
融合国际和传统与现代的中国  
元素

25 Meter Swimming Pool  
25米的泳池

Attractive Outdoor Gardens  
漂亮的户外活动场地

Community Area and Café  
共用的活动空间和咖啡厅

Separate ECE Facility  
独立的幼儿园设施

Gyms and Libraries for Upper  
School, Lower School and ECE  
with Strategic Views  
高年级和低年级有分别各自的  
体育馆和图书馆

400 seat Blackbox Theater and  
Performing Arts Center  
400座的黑匣子和艺术展示厅

600-650 Seat Theater  
600-650座的剧院

Large Main Campus and Separate  
ECE Cafeterias  
独立的主校区和幼儿园分开

100x60 Meter pitch (allows two  
45x60 Meter 7-a-side pitches  
inside)  
100\*60的足球场，可容纳2个  
45\*60的7人制的足球赛

Purposeful Designs of Learning  
Spaces Based on Ages of Students  
专门设计的学习空间

Strong Consideration for  
Environmental Planning, Energy  
Efficiencies and Sufficient Safe  
Indoor Space on Rainy/Poor AQ  
Days 专门为了环境设计，安全  
的室内场地，全面的空气净化  
设备

One Drop-Off Point for  
Transportation  
一个接送车下车点



# The Brief...

## Early Childhood Center (ECE)

- Very Large 110m2 Classrooms to Support Inquiry Centers Inside Classrooms
- 110平方米的大型教室
- Early Childhood Literacy Library
- 专门的图书馆
- Inquiry Garden, Indoor and Outdoor Playground Areas Designed for Children 2-5 Years Old
- 专门的游乐设施
- Large Rhythm and Movement/Gym/Assembly Space
- 大型体育空间
- Separate Access from Main Campus
- 可以直接通往主校区
- Joined by Chinese Garden to Main Campus
- 与主校区的中式公园相连接
- ECE Cafeteria
- ECE餐厅



# The Brief...

## Lower School (Grades 1-5)

- Large 85m<sup>2</sup> Classrooms to Support Inquiry Centers Inside Classrooms
- 85平米的教室
- Large Library for Reading, Investigation, Collaboration, and Study
- 大型图书馆
- Outdoor Playground Areas Designed for Children 5-12 Years Old
- 5-12岁的户外运动场
- Large Gym that can Accommodate at least One Volleyball/Basketball Competition Court
- 大型体育馆可以进行排球/篮球比赛
- STEAM (Science, Technology, Engineering, Arts, and Mathematics) Center
- STEAM中心
- Grade Level Classrooms Together with Common Space for Breakout Learning
- 同个年级在一起



# The Brief...

## Upper School (Grades 6-12)

- Large Upper School Library for Archives, Research and Collaboration (ARC) and attached to Common Café
- 大型图书馆和咖啡厅
- Some Smaller 45m2 Classrooms for World Languages and other Specialists
- 45平方米的教室
- Large Gym that can Accommodate at least Two Volleyball/Basketball Competition Courts
- 大型体育馆可同时进行2场比赛
- Design Center for Technology, Creativity and Innovation
- 专门的设计中心
- Common Spaces outside of Classrooms for Breakout Learning and Socializing during, between and after Classes
- 以学科为主的学习中心
- Fitness Center
- 健身中心

## Middle School (Grades 6-8)

- Large 85m2 Classrooms Grouped by Grade Level for Math, English, Science and Social Studies
- 85平方米的教室以科目来排布位置
- Outdoor Area Designed for Children 12-15 Years Old
- 为12-15岁学生设计的户外场地

## High School (Grades 9-12)

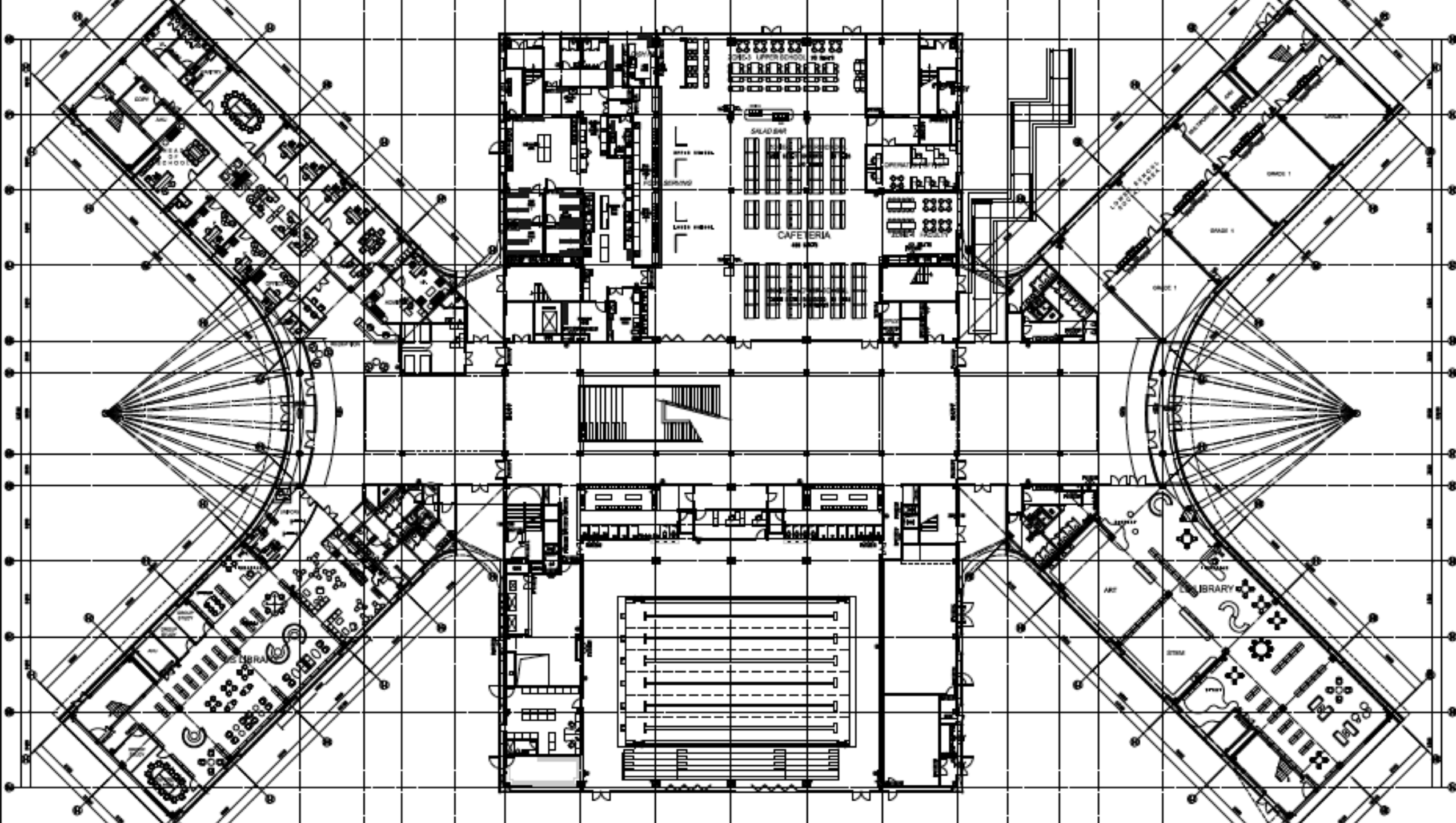
- Classrooms Organized by Department
- 以学科为中心
- Accessible Laboratories, Design Center, and Music Rooms
- 实验室，设计中心，音乐中心





总用地面积	SITE ARER	50000 sqm.
总建筑面积	TOTAL CONSTRUCTION AREA	56498 sqm.
地上建筑面积	ON THE GROUND	48449 sqm.
主校区	MAIN CAMPUS	41961 sqm.
幼儿园	ECE	6488 sqm.
地下建筑面积	UNDER GROUND	8049 sqm.
机动车库	GARAGE	8049 sqm.
建筑高度	HEIGHT	23.7m.
建筑占地面积	AREA COVERED	13298 sqm.
绿地面积	GREEN AREA	17380 sqm.

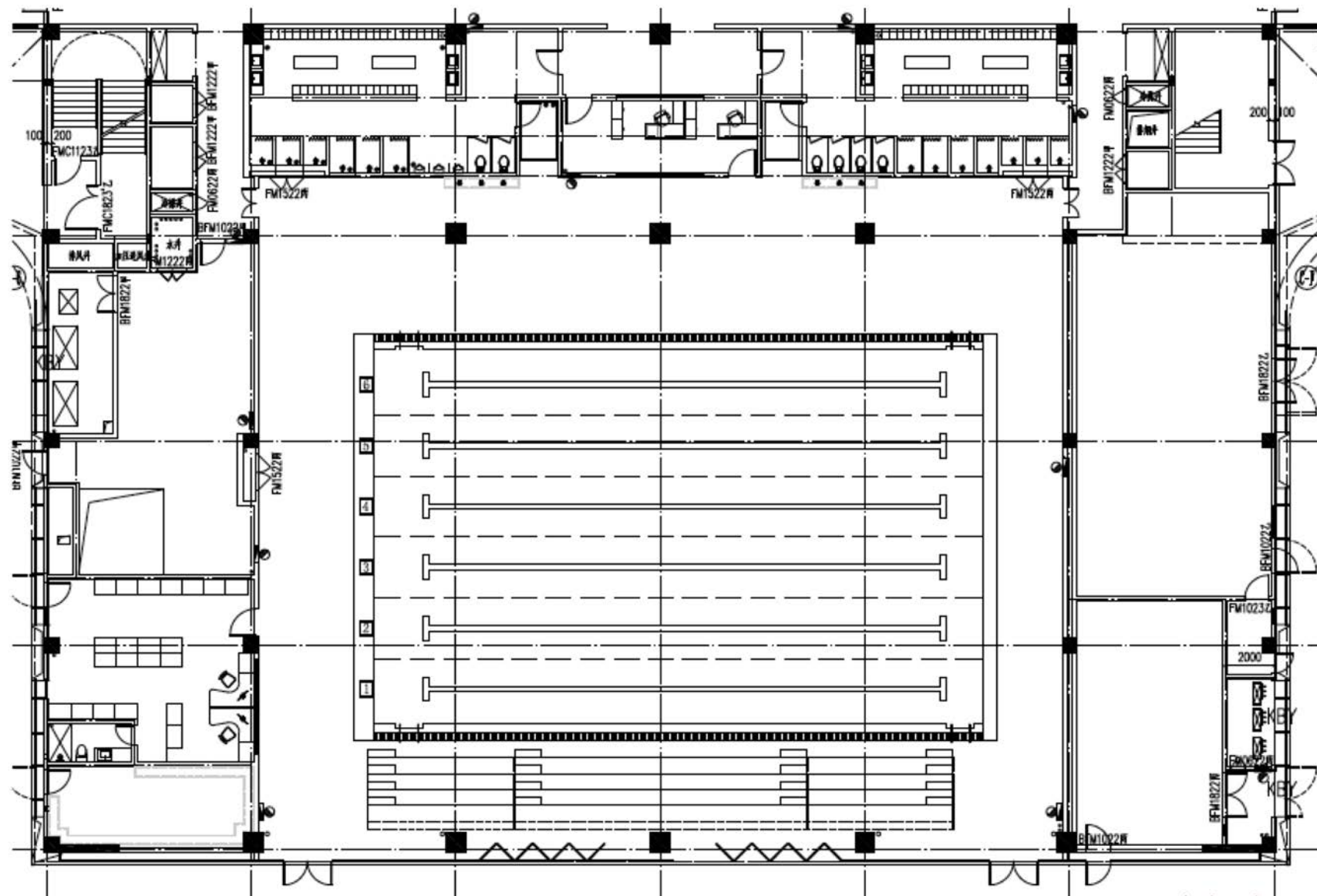




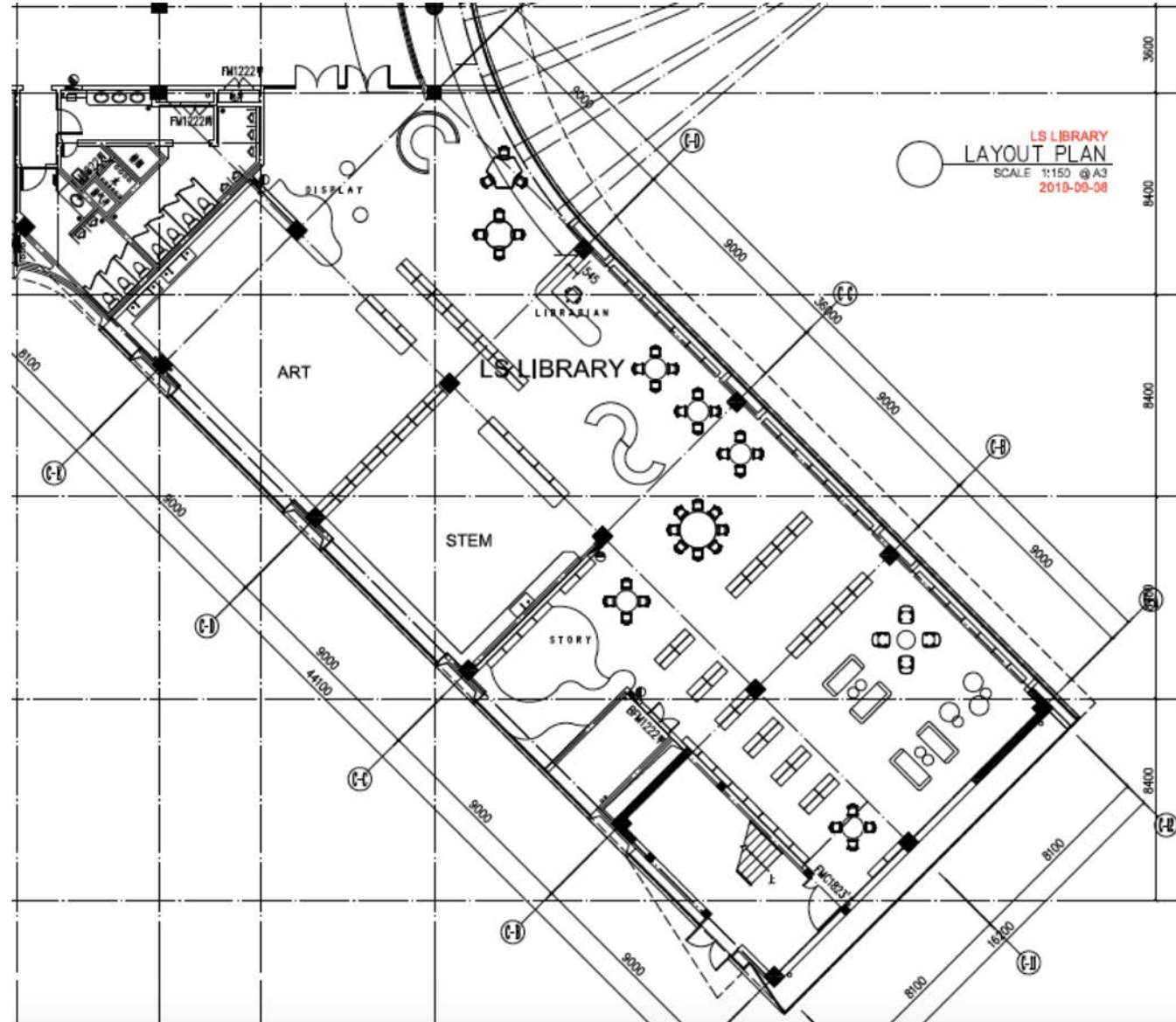




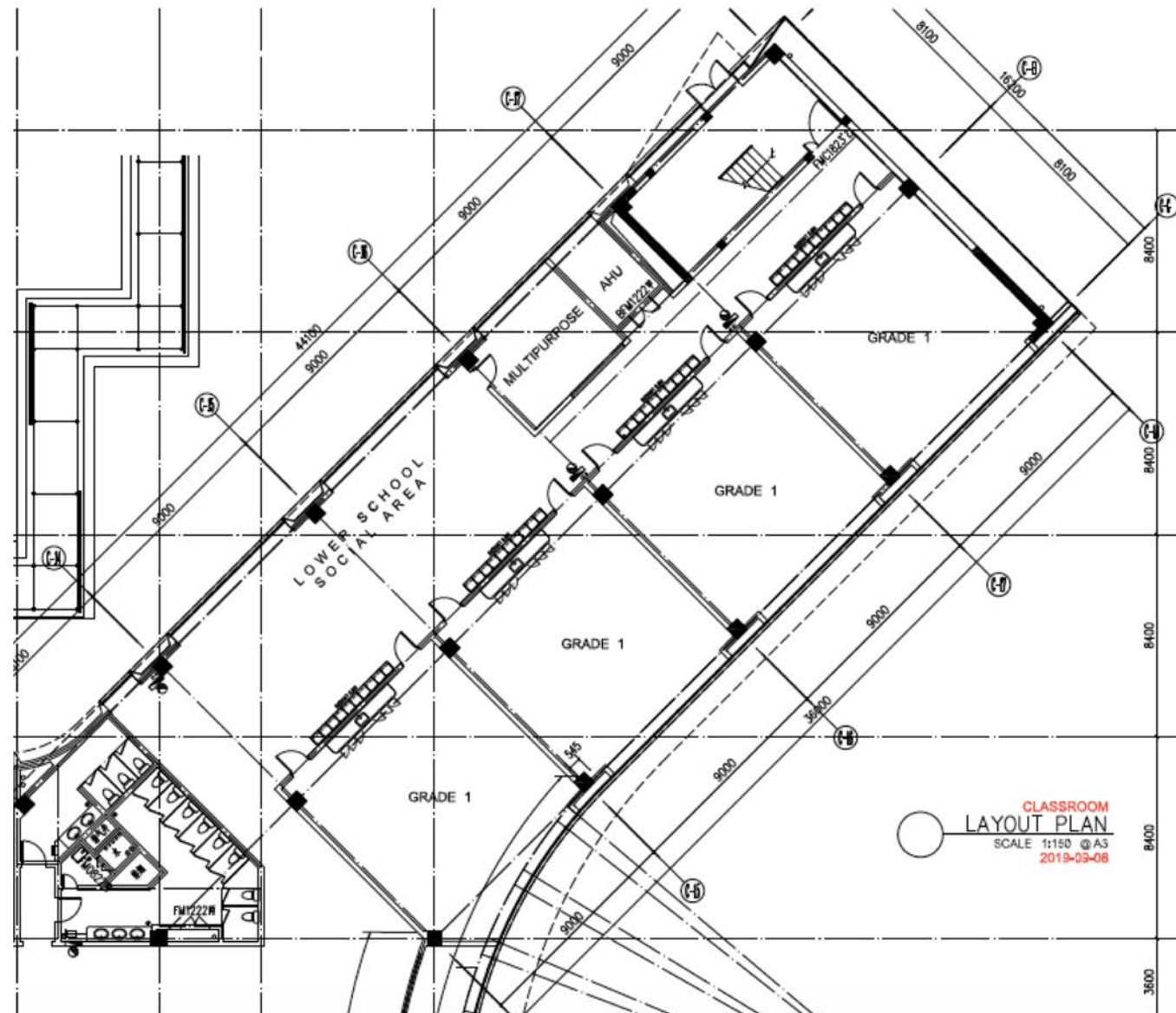




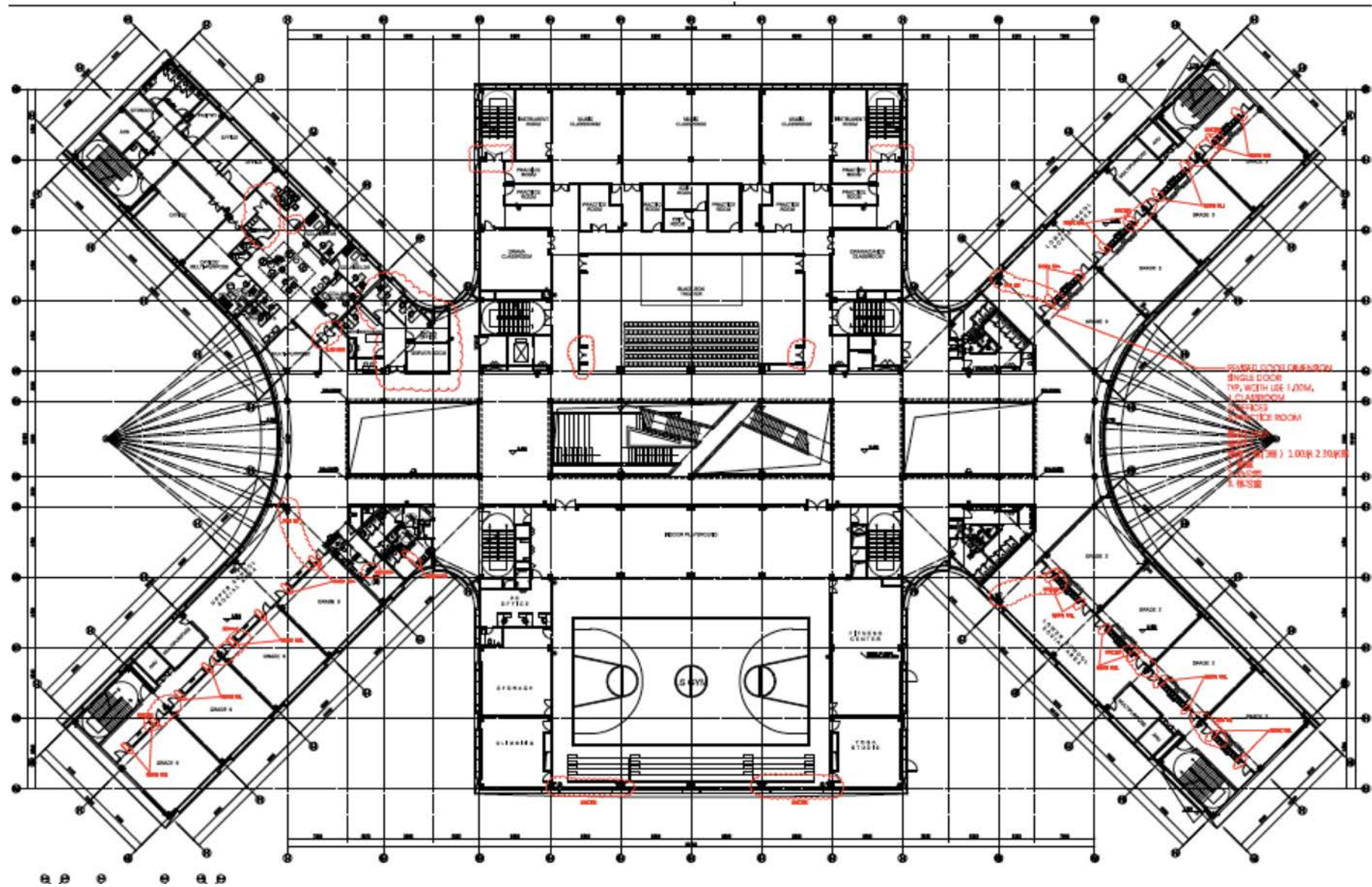




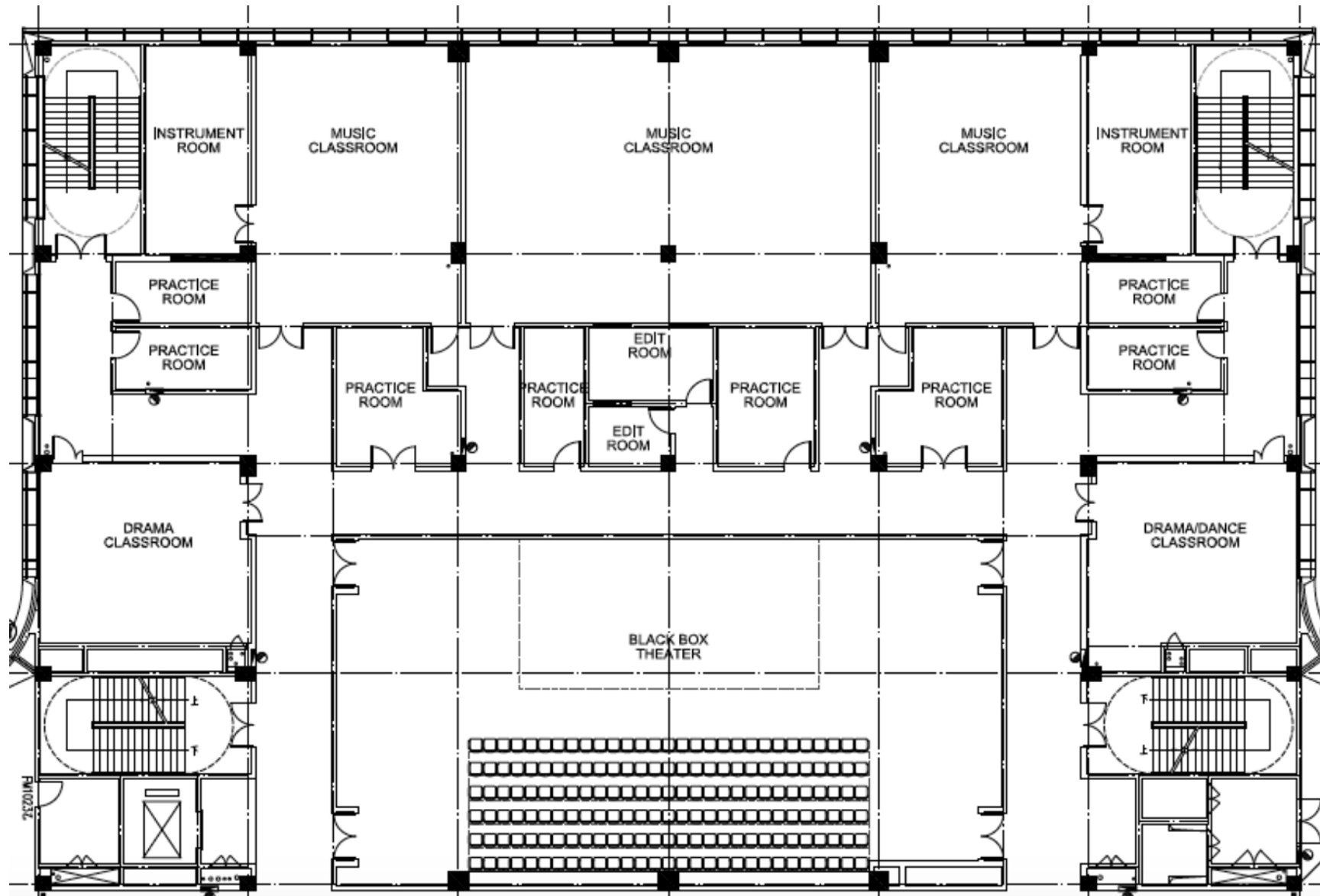




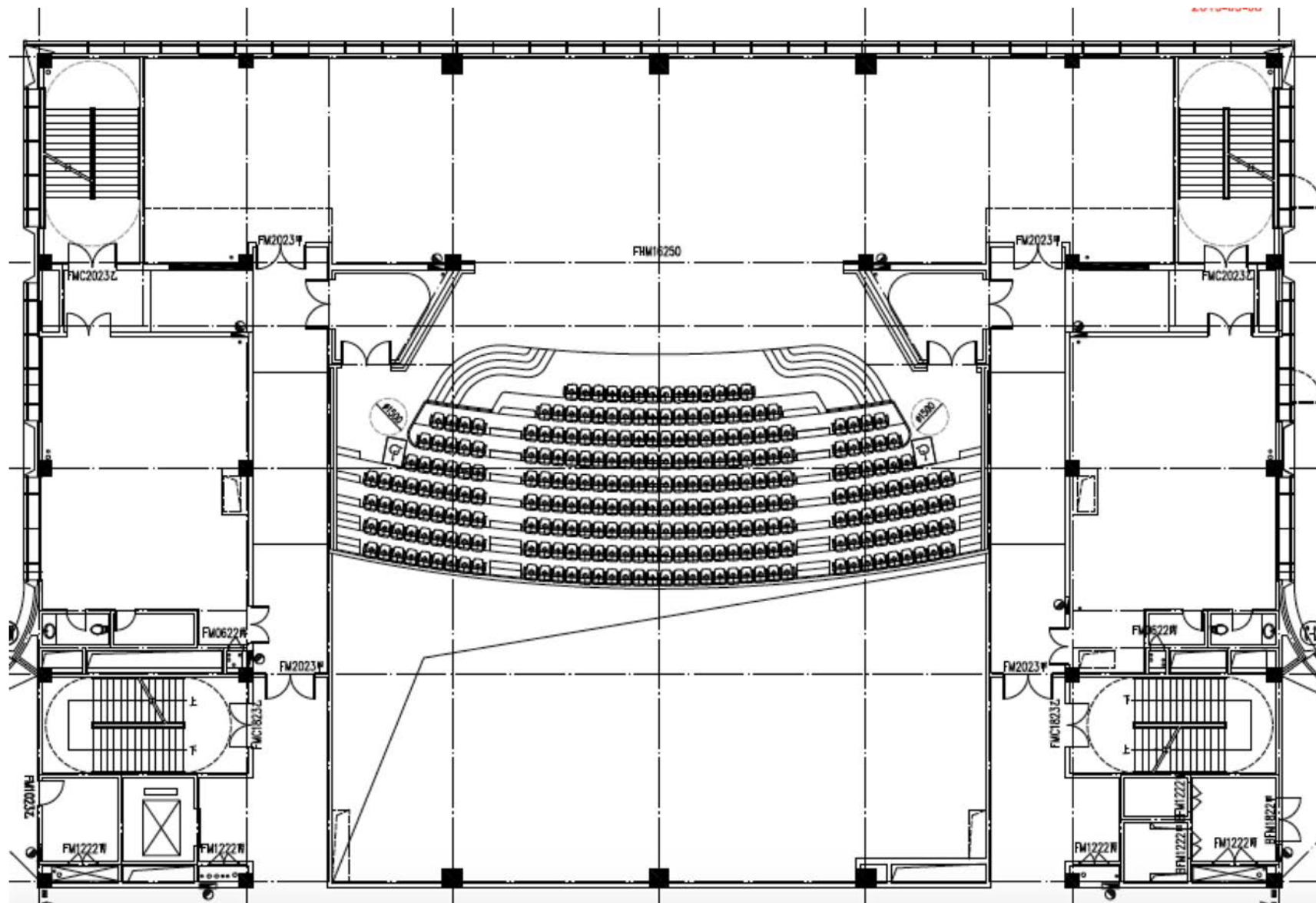




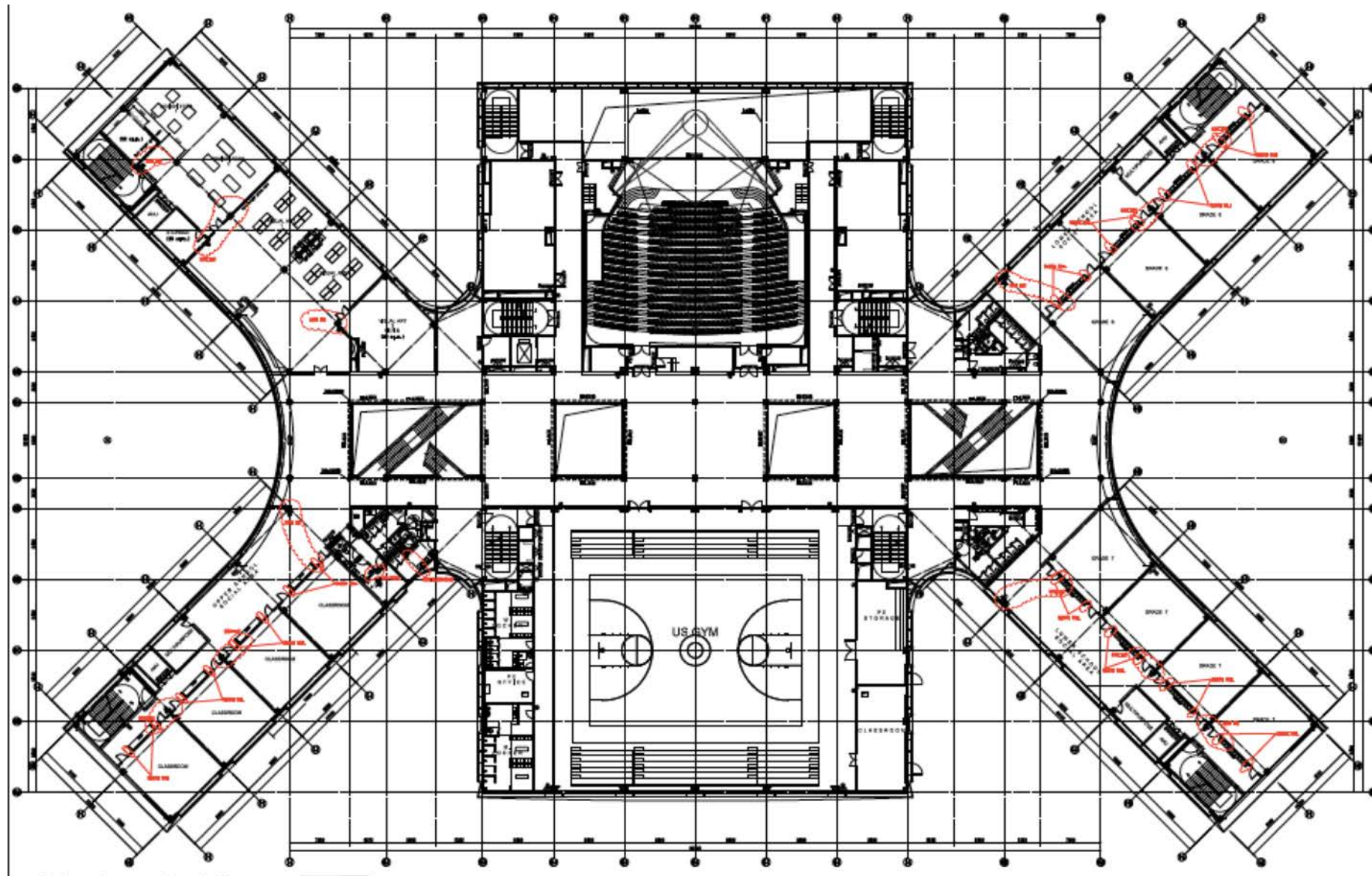


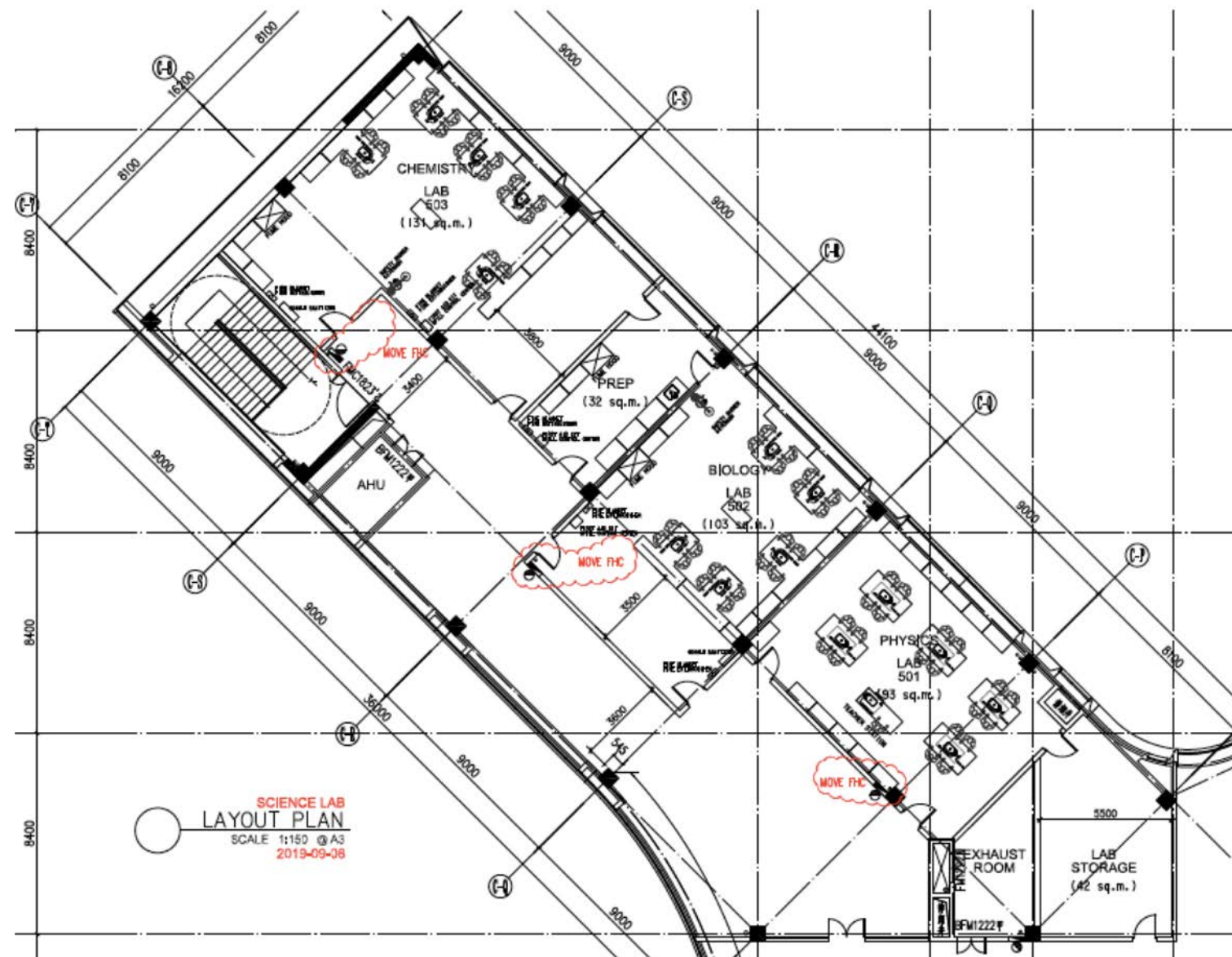






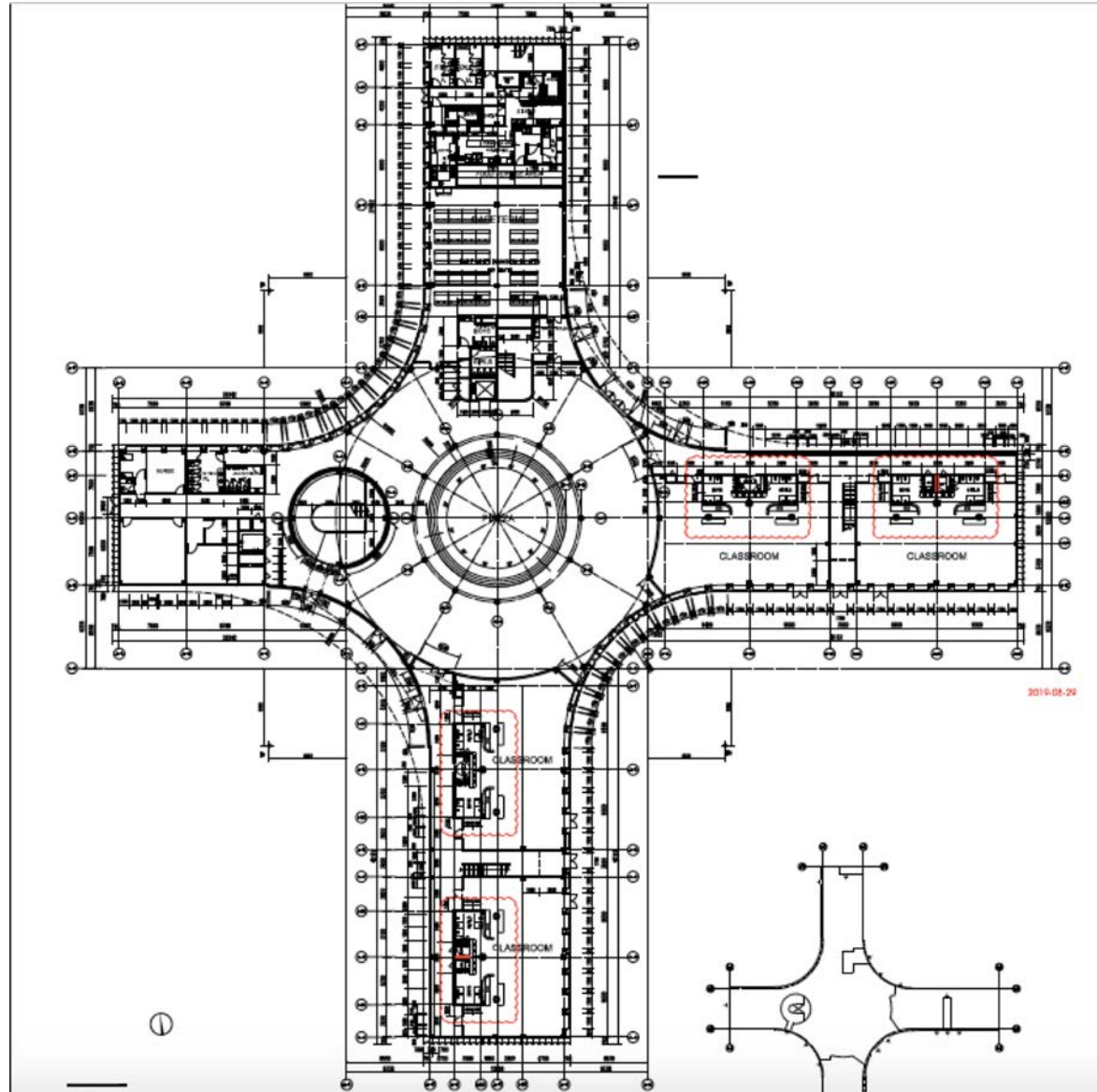


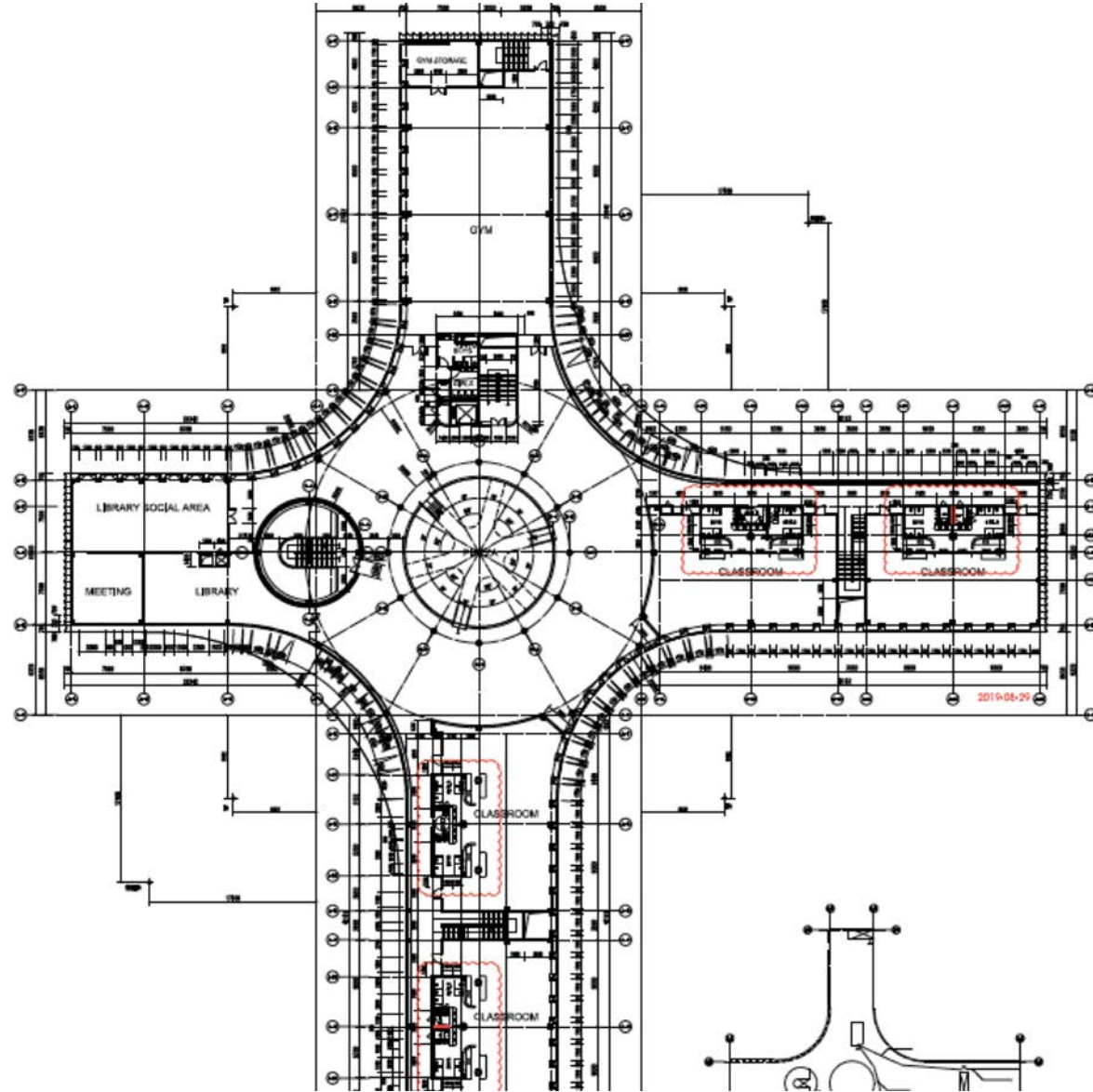




SCIENCE LAB  
LAYOUT PLAN  
SCALE 1:150 @ A3  
2019-09-08





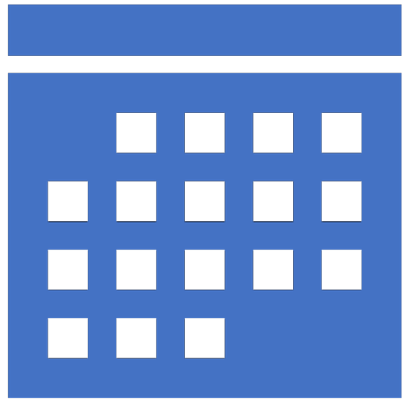






# January 2021-August 2022 Transition Phases

## 2021年1月-2022年8月进入搬迁阶段

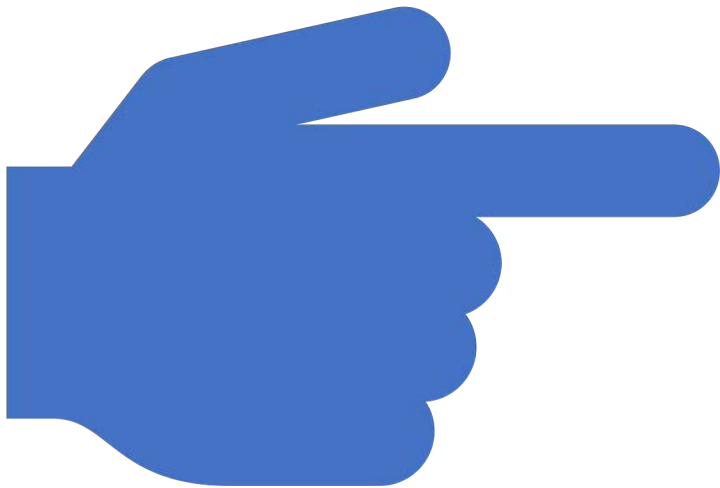


- Criteria for move 平稳过渡
- Able to stay on current HIS campus until August 2023 现在的校区可以使用到2023年8月
- Phase I: Move all Upper School in January 2021, Early Years through Grade 5 continues on current HIS Campus 第一阶段：2021年1月搬迁高年级， 幼儿园-5年级继续在现在的HIS上课
- Phase II: Move ECE and Lower School to new HIS Campus in August 2021 第二阶段：2021年8月搬迁幼儿园和小学到新校区
- Options to Consider: Allow 1-3 classes of Lower School to transition to New Campus in August 2021 另一种方案：2021年8月每个年级有1-3个班搬到新校区
- Community will be surveyed as to preferences. Space and staffing will allow us to be flexible for 18 months 将在本社区内进行调查。空间和人员配备将使我们在18个月的时间内保持灵活度。
- All grades will hosted at new HIS Campus by August 2022 全部学校在2022年8月搬迁完成。



# Answers before Questions...

## 回答问题之前



- Local design firm and international group oversight 这个项目是由当地的设计公司设计，由国际集团监管
- Tuition will NOT be increased more than past (3-9%) and most fees remain consistent, exception for Upper School where reduced tuition increase to meet BYOM goal 学费涨幅不会超过过去(3-9%)，大部分学费涨幅保持一致，但高年级学费涨幅会降低以达到BYOM目标值
- The construction has commenced (planned timeline is 12-14 months with scheduled launch in January 2021) 建筑公司表示项目会在12-14个月完工，那就差不多是2021年1月
- We will be hosting several events on new site with students, faculty and parents 我们将会在新的校区为学生，老师和家长举办几次活动
- There will be significant attention on the emotions of transition 我们会非常注重因转换而带来的情绪问题
- Yes, we will still host Welcome Back BBQs, WESTLAKE MUN, Halloween Parade, International Day and Fun Run events 我们还会继续有WELCOME BACK BBQ, 西湖模联，万圣节游行，国际日和趣味跑步活动
- Yes, we will expand transportation services to the new campus, including After-School Activities (ASA) service 我们会增加校车服务，包括课外活动以后的校车服务
- Yes, there are major housing developments going up in the area at various costs 在那个周边将会有许多的楼盘项目起来，价格不一
- Until we can safely move, we will continue improving current campus for learning and aesthetics 在我们安全搬入新校区之前，我们会继续在这里不断改进为学生学习提供更好的环境





Want to See More? Have a Visit!!!





















Thank you...

Questions???

非常感谢！问题？

Interested in joining Design Advisory Group???

如果有兴趣加入设计小组

Email: [jstubbs@his-china.org](mailto:jstubbs@his-china.org)