



Middle Years Programme



Navigating the International Baccalaureate and ManageBac



IB MIDDLE YEARS PROGRAMME

LANGUAGE ACQUISITION
LANGUAGE AND LITERATURE
INDIVIDUALS AND SOCIETIES

ACTION • SERVICE
EDUCATION
CONCEPTS • APPROACHES TO TEACHING • GLOBAL CONTEXTS
APPROACHES TO LEARNING

COMMUNITY PROJECT • PERSONAL PROJECT
SCIENCES
DESIGN

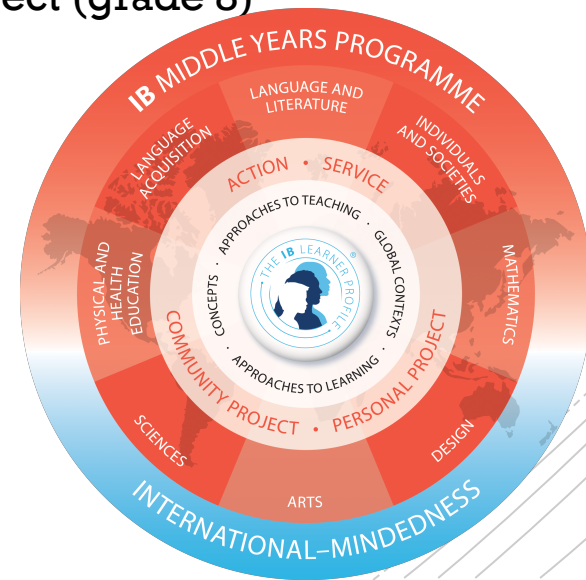
ARTS
INTERNATIONAL MINDEDNESS



IB Middle
Years
Programme
MYP

MYP Key Terms to know

- ATL Skills -- Approaches to Learning skills
- Key Concepts
- Global Contexts
- Criteria / Strands
- Formative / Summative Assessments
- SA – Service as Action
- PP – Personal Project (grade 10)
- CP – Community Project (grade 8)



MYP Key Concepts

Aesthetics	Change	Communication	Communities
Connections	Creativity	Culture	Development
Form	Global Interactions	Identity	Logic
Perspective	Relationships	Systems	Time, place, and space

Language and literature	Analysing	Organizing	Producing text	Using language
Language acquisition	Comprehending spoken and visual text	Comprehending written and visual text	Communicating	Using language
Individuals and societies	Knowing and understanding	Investigating	Communicating	Thinking critically
Sciences	Knowing and understanding	Inquiring and designing	Processing and evaluating	Reflecting on the impacts of science
Mathematics	Knowing and understanding	Investigating patterns	Communicating	Applying mathematics in real-world contexts
Arts	Knowing and understanding	Developing skills	Thinking creatively	Responding
Physical and health education	Knowing and understanding	Planning for performance	Applying and performing	Reflecting and improving performance
Design	Inquiring and analysing	Developing ideas	Creating the solution	Evaluating

MYP Assessment Strands

■ **Individuals and Societies**

A. Knowing and Understanding

- use terminology in context
- demonstrate knowledge and understanding of subject-specific content and concepts through descriptions, explanations and examples.

B. Investigating

- formulate a clear and focused research question and justify its relevance
- formulate and follow an action plan to investigate a research question
- use research methods to collect and record relevant information
- evaluate the process and results of the investigation.

MYP Assessment Strands

■ Individuals and Societies (cont)

C. Communicating

- communicate information and ideas using an appropriate style for the audience and purpose
- structure information and ideas in a way that is appropriate to the specified format
- document sources of information using a recognized convention.

D. Thinking Critically

- discuss concepts, issues, models, visual representation and theories
- synthesize information to make valid arguments
- analyse and evaluate a range of sources/data in terms of origin and purpose, examining value and limitations
- interpret different perspectives and their implications.



MYP Projects

- Community Project – Grade 8
- Personal Project – Grade 10

Approaches to Learning

Thinking skills

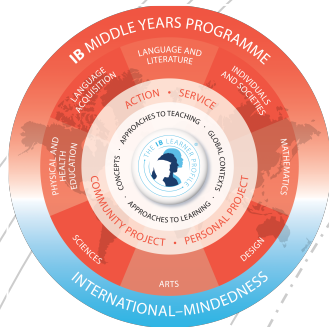
Social Skills

Research Skills

Communication Skills

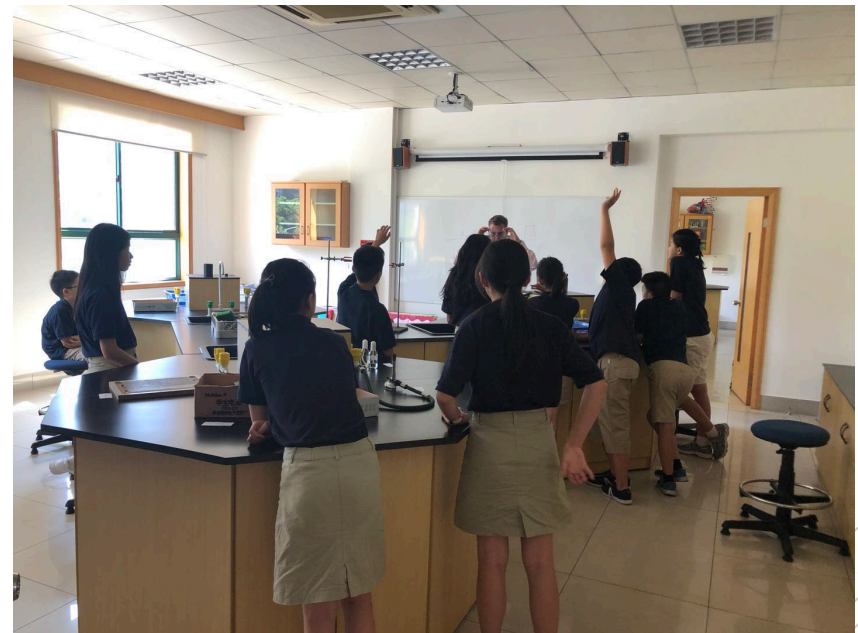
Self-Management Skills





Approaches to Teaching

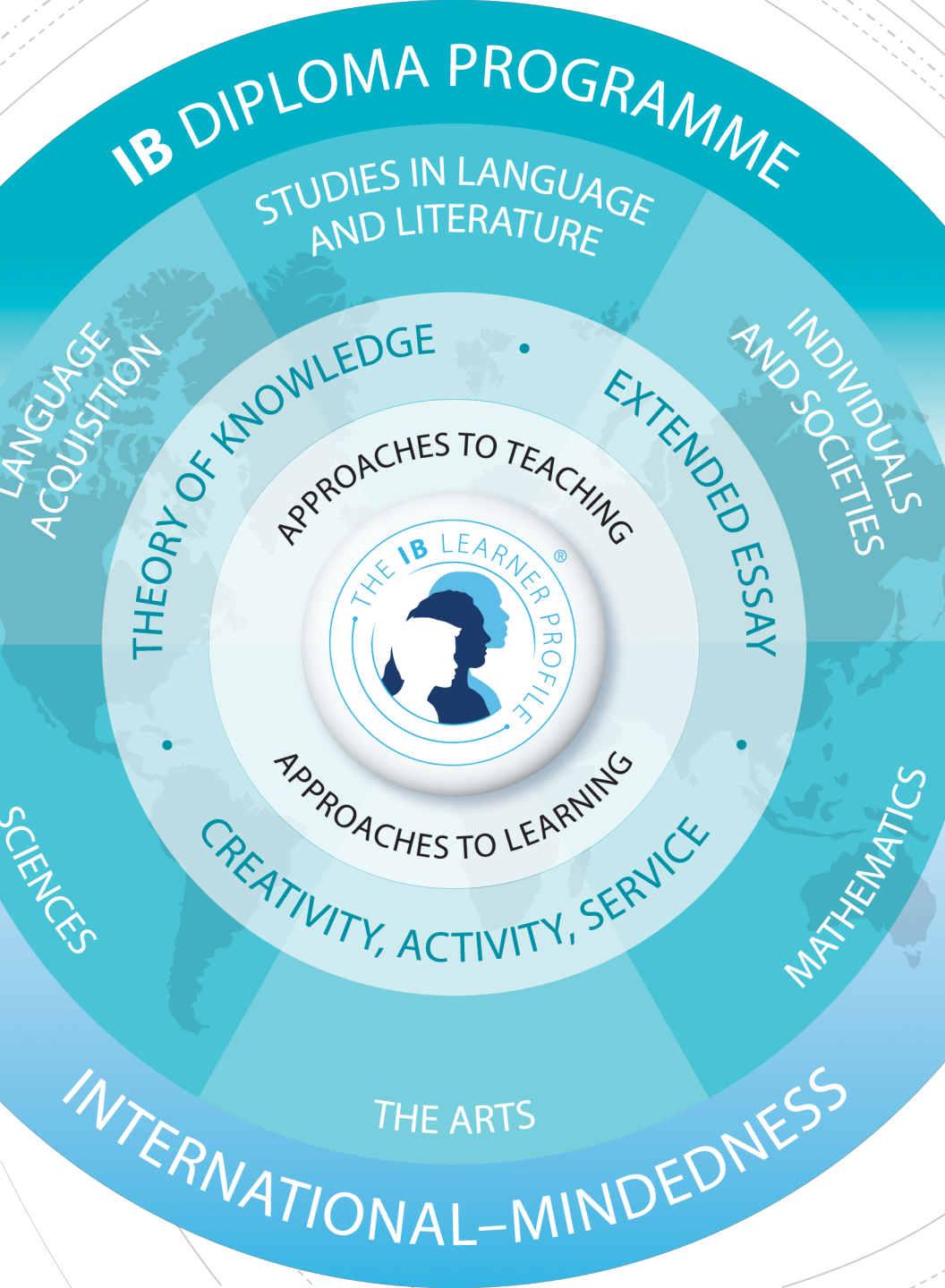
Inquiry Based
Conceptually focused
Contextualized
Collaborative
Differentiated
Informed by Assessment





Learner Profile

- **Inquirers**
- **Knowledgeable**
- **Thinkers**
- **Communicators**
- **Principled**
- **Open-Minded**
- **Caring**
- **Risk-Takers**
- **Balanced**
- **Reflective**



IB Diploma
Programme
IBDP



IBDP Key Terms to know

- TOK – Theory of Knowledge
- CAS – Creativity, Activity, Service
- EE – Extended Essay
- IA – Internal Assessment
- ATL – Approaches to Learning

Explore our curriculum

For each division, by grade or content area.

Curriculum

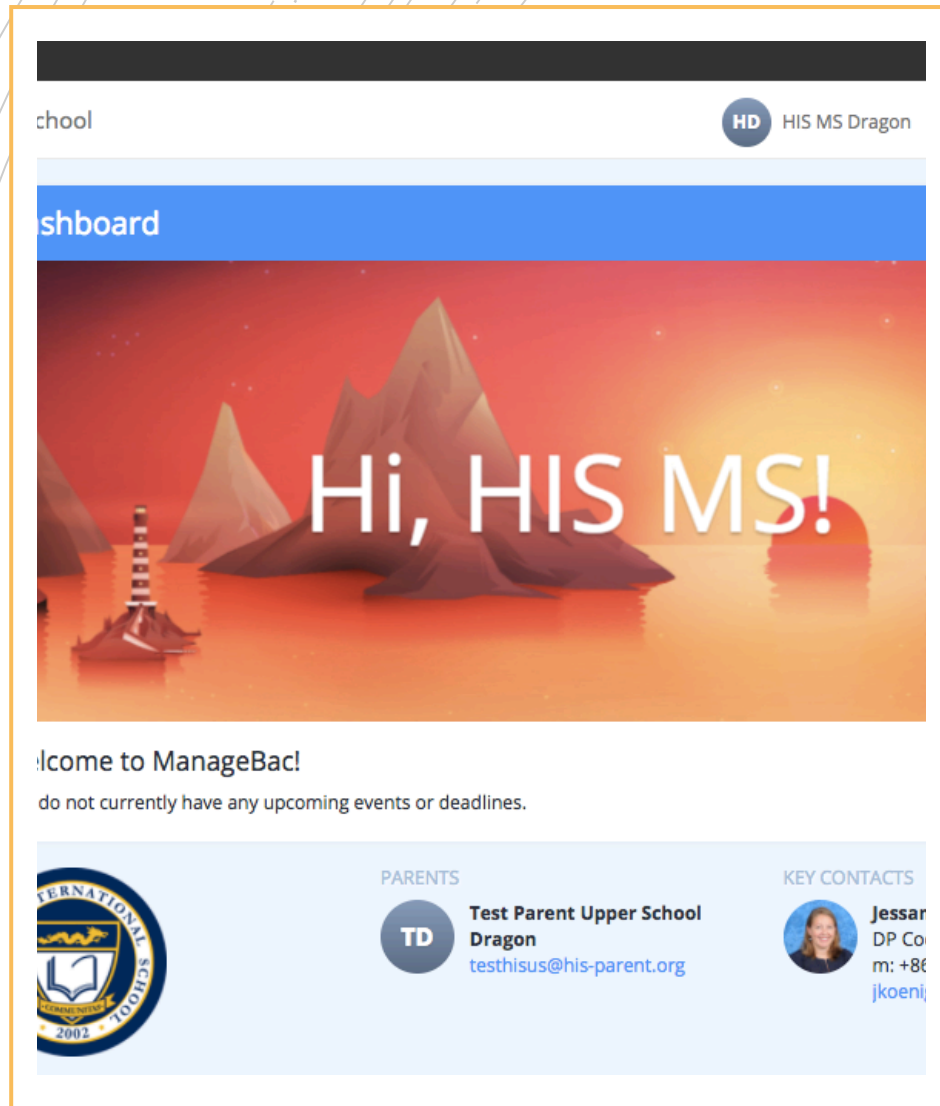
Student Support
Services

Grade 6-10 schedule

Website

<http://www.his-china.org>

Mondays	Tuesdays	Wednesdays	Thursdays	Fridays
Block 1 8:00 – 9:10	Block 1 8:00 – 9:10	Block 1 8:00 – 9:10	Block 1 8:00 – 9:10	Block 1 8:00 – 9:10
<i>Morning Break</i>	<i>Morning Break</i>	<i>Morning Break</i>	<i>Morning Break</i>	<i>Morning Break</i>
Block 2 9:30 – 10:40	Block 2 9:30 – 10:40	Block 2 9:30 – 10:40	Block 2 9:30 – 10:40	Block 2 9:30 – 10:40
Block 3 10:45 – 11:55	Block 3 10:45 – 11:55	Block 3 10:45 – 11:55	Block 3 10:45 – 11:55	Block 3 10:45 – 11:55
Lunch 12:00 – 12:30	Lunch 12:00 – 12:30	Lunch 12:00 – 12:30	Lunch 12:00 – 12:30	Lunch 12:00 – 12:30
Block 4 12:35 – 1:45	Block 4 12:35 – 1:45	Block 4 12:35 – 1:45	Block 4 12:35 – 1:45	Block 4 12:35 – 1:45
Block 5 1:50 – 2:50	Advisory 1:50 – 2:50	Block 5 1:50 – 2:50	Block 5 1:50 – 2:50	Activity 1:50 – 2:50



Managebac

- Learning and Communication Platform
- Calendar
- Assignments, resources, files
- Gradebook for feedback and assessment
- Turnitin.com plagiarism check
- Student Portfolios
- Attendance
- CAS / Service / ASA

8:04

[Search](#)**ManageBac**

ManageBac Inc.

OPEN**3.8** ★★★★★☆

25 Ratings

4+

Age

What's New[Version History](#)

Version 1.0.9

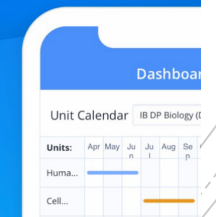
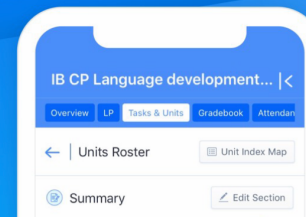
1w ago

- Add ability for support login

Preview**ManageBac
Redesigned for
Mobile**

ManageBac is built for students, parents, teachers and coordinators on the go!

The new MB iOS app supports user types including students, parents, teachers, coordinators and admins across all curriculum programmes with an improved experience on tablet & phone.



Today



Games



Apps



Updates



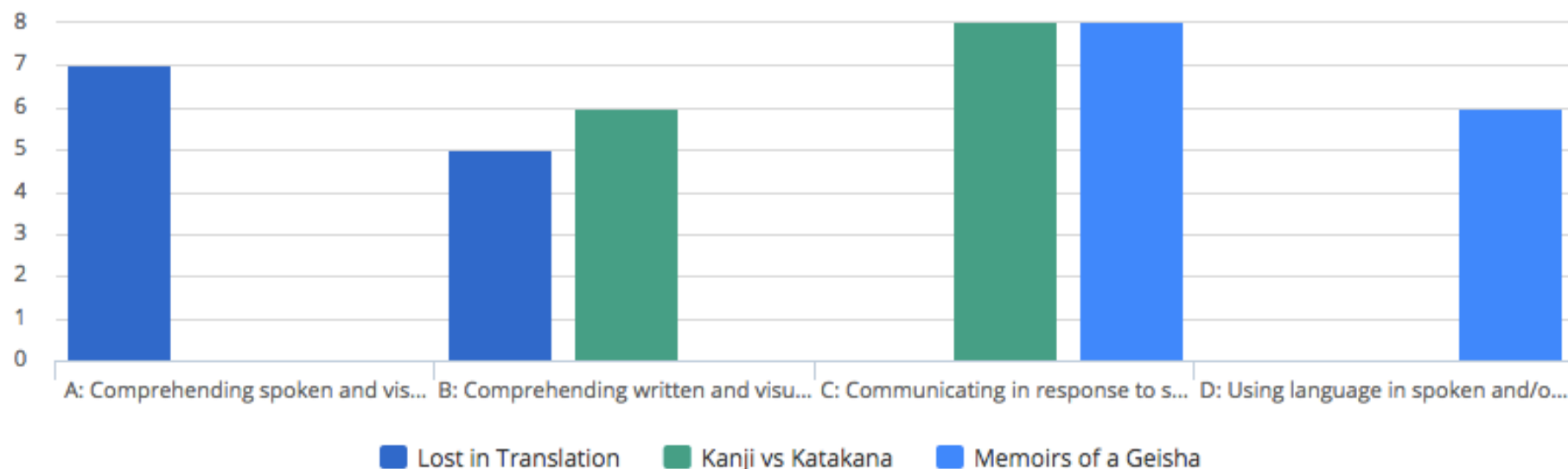
Search

IB MYP Japanese Phase 3 (Grade 10)

[Overview](#)[Tasks](#)[Units](#)[Calendar](#)[Messages](#)[Files](#)[Students](#)

Progress Chart

Term 1



Upcoming

OCT 25 A Western Otaku: the rise in anime popularity in the West

Formative

Task

Wednesday at 10:00 PM

**NOV 14** Memoirs of a Geisha

Summative

Task

Tuesday at 10:00 PM



C: Communicating in response to spoken and/or written and/or visual text 8 8

D: Using language in spoken and/or written form 6 8

step6: upload the document name the document 杭州国际学校介绍_name

step7: present your paragraph on Thursday(no cue cards allowed). This paragraph will be a part of your summative presentation. answer the questions

杭州国际学校在哪儿？

杭州国际学校一共有几个年级？

杭州国际学校大概有多少师生(老师加学生) ？

step8: make a sentence each using the words below:

一共

给.....介绍

大概

write them down on your notebook.

step9:

Go to quizlet to study School life phase 2 part 2

AUG29

Weekly Test

Formative Task

Thursday at 1:55 PM

C:68

D:68

Phase1: meaning of 你，好，你多大？我.....岁。你叫什么？我叫.....。我有.....，我没有.....。爸爸，妈妈，哥哥，姐姐，弟弟，妹妹。个，两个。家，和，口，人。

word dictation : 1-10, 你 好 多 大 岁 没 有 个

Phase2: Oral presentation

word dictation: 国际 学校 介绍 一共



Hangzhou International School

杭州国际学校

SEMESTER ONE

JULY				
M	T	W	TH	F
1	2	3	4	5
8	9	10	11	12
15	16	17	18	19
22	23	24	25	26
29	30	31		

AUGUST				
M	T	W	TH	F
			1	2
5	6	7	8	9
12	13	14	15	16
19	20	21	22	23
26	27	28	29	30

SEPTEMBER				
M	T	W	TH	F
2	3	4	5	6
9	10	11	12	13
16	17	18	19	20
23	24	25	26	27
30				

OCTOBER				
M	T	W	TH	F
	1	2	3	4
7	8	9	10	11
14	15	16	17	18
21	22	23	24	25
28	29	30	31	

NOVEMBER				
M	T	W	TH	F
				1
4	5	6	7	8
11	12	13	14	15
18	19	20	21	22
25	26	27	28	29

DECEMBER				
M	T	W	TH	F
2	3	4	5	6
9	10	11	12	13
16	17	18	19	20
23	24	25	26	27
30	31			

School Calendar 2019-2020

IMPORTANT DATES:

AUGUST

01-07 New Faculty Inservice
08-13 All Faculty Inservice
14 New Family Orientation / Open House
15 First Day of Semester One

SEPTEMBER

13 Mid-Autumn Festival Holiday (no school)
27 Professional Inservice (no school for students)

OCTOBER

Sep 30 - Oct 04 National Holiday and October Break (no school)
18 Mid-Term Progress Reports
22 Parent-Student-Teacher Conferences
28 Professional Inservice (no school for students)

NOVEMBER

29 Professional Inservice (no school for students)

DECEMBER

13 End of Semester One

JANUARY

06 Professional Inservice / New Family Orientation (no school for students)
07 First Day of Semester Two
24-31 Chinese New Year Holiday

FEBRUARY

28 Professional Inservice (no school for students)

MARCH

17 Student-Led Conferences
26 Mid-Term Progress Reports
27 Professional Inservice (no school for students)

APRIL

Mar 30-Apr 03 Qingming "Tomb Sweeping" Festival Holiday and Spring Break

MAY

01 Labor Day Holiday

JUNE

18 End of Semester Two
19 Professional Inservice (no school for students)

Total Student Days: 180

LEGEND

New Family Orientation Day / Open House
Legal Holidays (no school)
New Staff Inservice (no school for students)

Professional Inservice (no school for students)
School Holiday (no school)
Back to School Nights (announced by each division)

Conferences
Beginning / End of Semester
Saturday Make Up Day (if needed)

SEMESTER TWO

JANUARY				
M	T	W	TH	F
		1	2	3
6	7	8	9	10
13	14	15	16	17
20	21	22	23	24
27	28	29	30	31

FEBRUARY				
M	T	W	TH	F
3	4	5	6	7
10	11	12	13	14
17	18	19	20	21
24	25	26	27	28

MARCH				
M	T	W	TH	F
2	3	4	5	6
9	10	11	12	13
16	17	18	19	20
23	24	25	26	27
30	31			

APRIL				
M	T	W	TH	F
		1	2	3
6	7	8	9	10
13	14	15	16	17
20	21	22	23	24
27	28	29	30	

MAY				
M	T	W	TH	F
4	5	6	7	8
11	12	13	14	15
18	19	20	21	22
25	26	27	28	29

JUNE				
M	T	W	TH	F
1	2	3	4	5
8	9	10	11	12
15	16	17	18	19
22	23	24	25	26
29	30			

Calendar

- September 7 – Welcome BBQ
- September 10 – China Trip Parent Meeting
- September 16-20 - ChinaTrips
- October 2-6– National Holiday
- October 18 – Mid-Term Reports
- October 22 – Parent – Teacher Conferences

Join us on
Saturday
afternoon!



Please give us
feedback about
today's session



PARENT COFFEE MORNING



**THURSDAY,
12TH SEPTEMBER
AT 8.15AM
IN THE CAFETERIA**



LANGUAGE SUPPORT AT HIS

WITH BEATRIZ LOPEZ (HEAD OF ESOL) AND KATIE FOSTER (UPPER SCHOOL ENGLISH LANGUAGE B TEACHER)