



Hangzhou International School  
杭州国际学校



# The New HIS Campus

August 2020

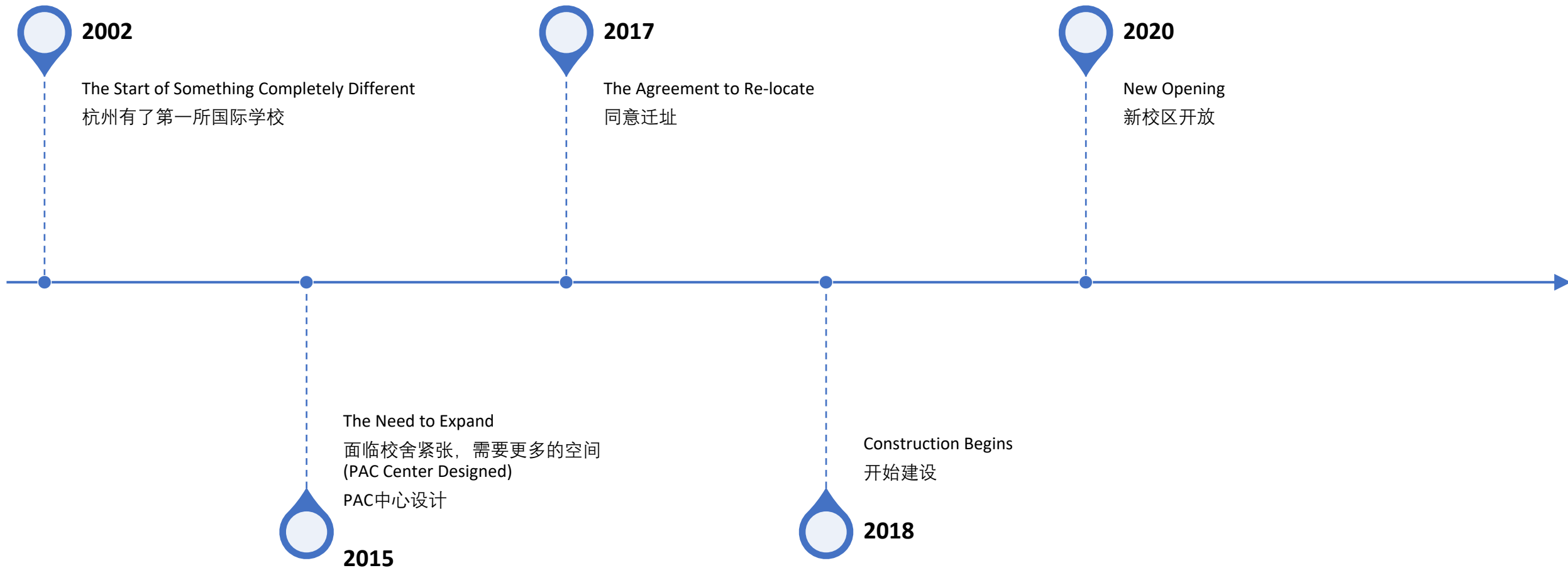
杭州国际学校新校区展示会



Welcome  
欢迎

- The History 历史
- The Location 地址
- The Brief 简介
- The Challenges and Opportunities 挑战与机遇
- The Latest Schematic Design 最新的示意图
- The Stages and Timelines 现阶段和时间线
- Q & A 问答

# A Little History... 一点点历史





# The Location...

@Yincui and Huxi Roads  
Baimahu (White Horse Lake)

Binjiang District

地址：映翠路和湖西路口西北角







The Location...  
Parks



# The Location...

## Canals





# The Location... Mountains







More Mountains...





More Mountains...



# The Location...

The New Land: 70 MU (approx. 50,000m<sup>2</sup>)

Current Land is 30 MU (approx. 20,000m<sup>2</sup>)

新校区70亩 (大约50,000平方米)

现在是30亩 (大约20,000平方米)

## Mandated Challenges:

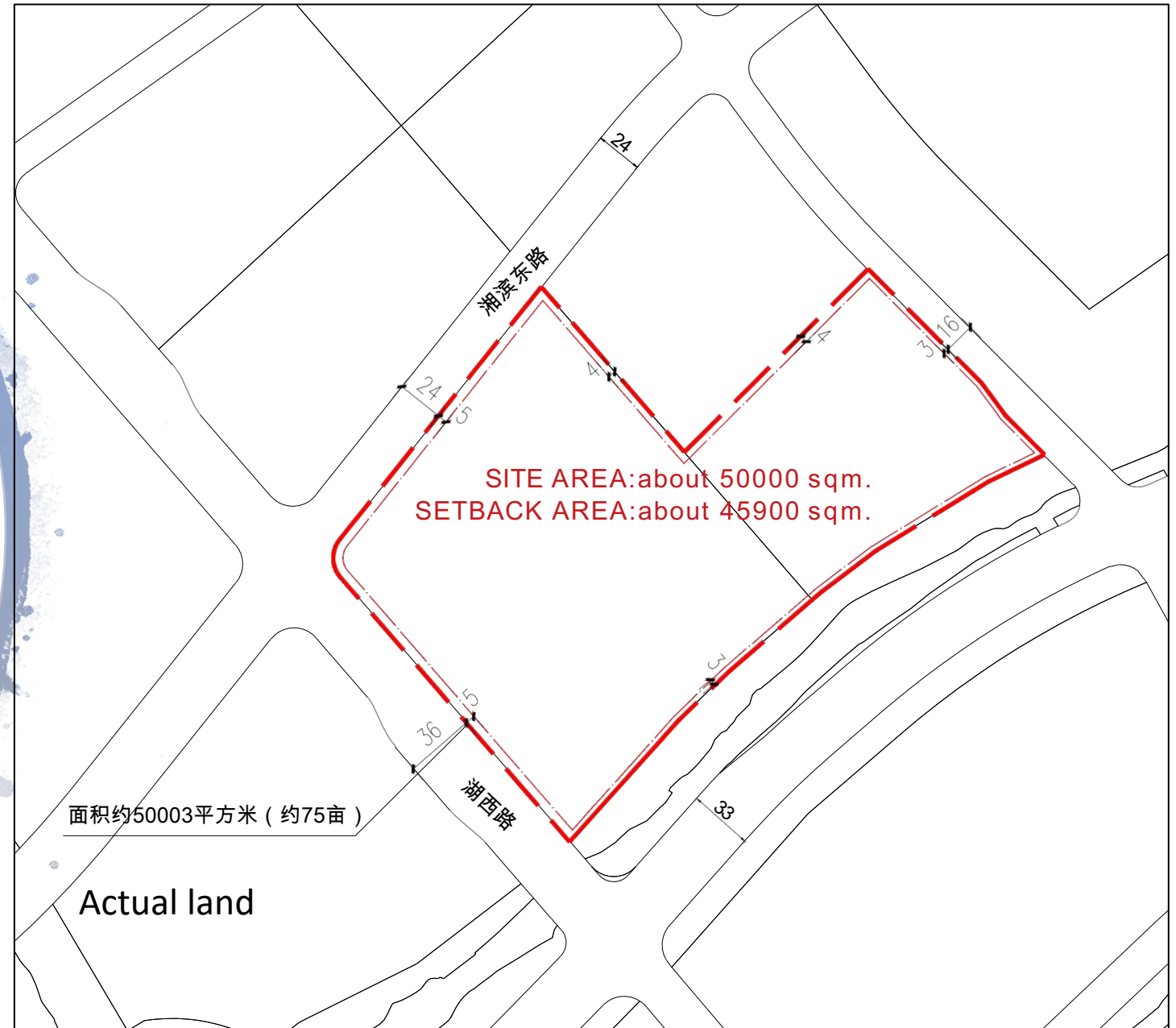
1/3 Green space, parking, setback and fire lanes, orientation, access, building density, plot ratio, and building heights.

强制性的挑战：绿地面积要占1/3，还有停车场，围栏，消防通道，容积率，建筑高度

## Opportunities:

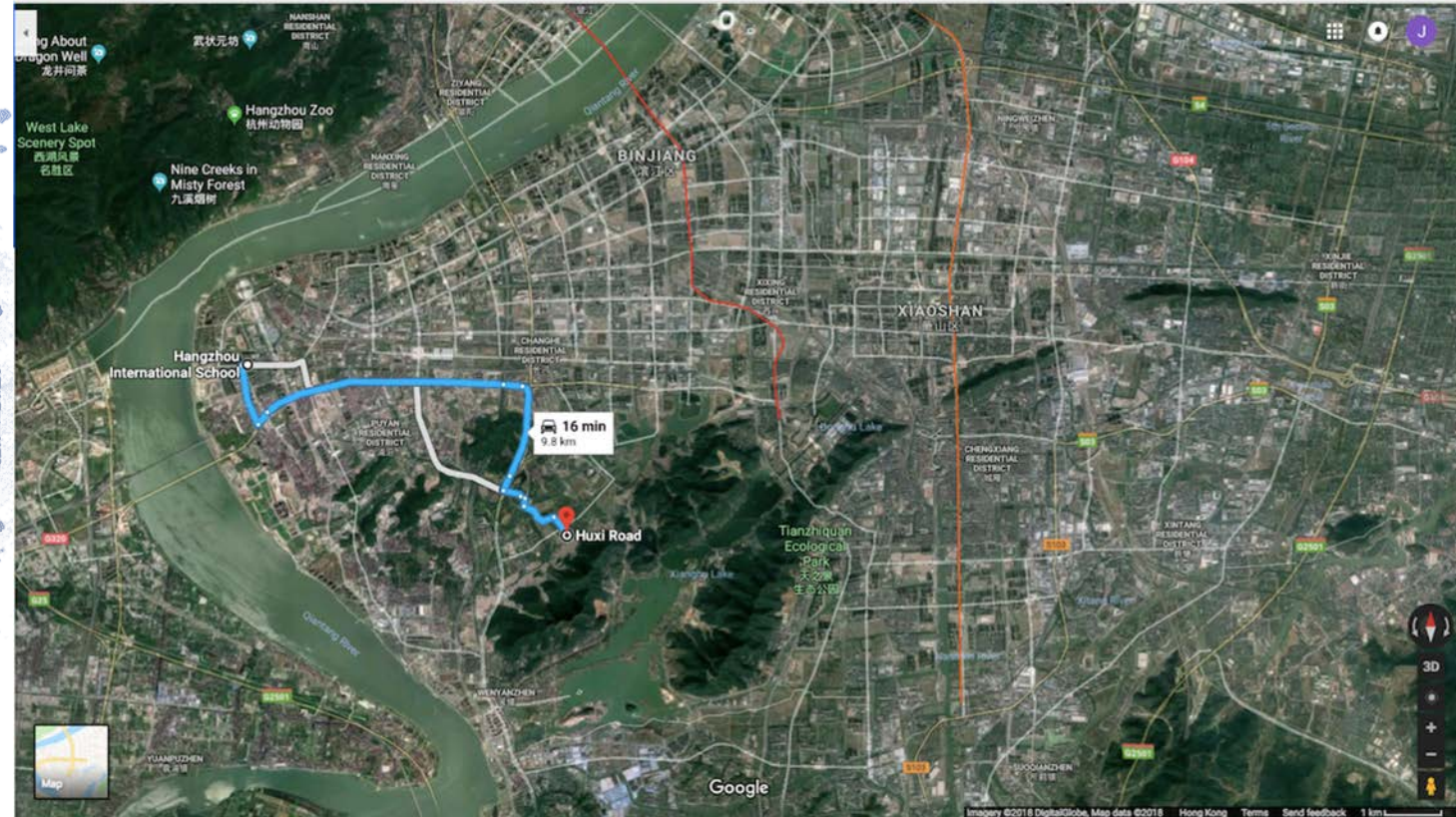
Design for future needs, use of space, flow of people, acoustics, colors, flooring, environments.

机遇：为了未来而设计地场地，以人为本，声音，颜色，地板，环境融为一体。



# The Location...

- About 12-20 minutes by car from current location
- 12-20分钟的车程
- About 1 hour 30 minute walk (2 hours over the mountain)
- 1个半小时走路或2个小时爬山
- Auto transport likely to be more consistent at 15 minutes w/ new roads
- 按现在的规划，到地铁站应该是15分钟左右，会有新的公交车通行





# The Opportunities...

## Most Essentials will not Change:最基本的坚持不变


- Vision and Mission 校义不变
- General Learning Targets 学习目标不变
- IB Commitment IB课程不变
- International School in China Context 中文涵盖不变
- Small Class Size Ratios 小班化不变
- Highest Quality Teachers 高素质的老师不变
- Dragon Spirit 龙的精神不变
- Commitment to Safety and Security of Students 为学生创造安全的环境不变





## HIS will Maintain its Unique Identity 杭州国际学校还是会维持独特性

- Community-Centered and Inclusive 以社区为中心
- IB World School IB学校
- University Preparation 为升学作准备
- Strong Opportunities in Academics, Arts, and Athletics 为学生提供最好的学业，艺术和运动的机会
- Promoting International-Mindedness & Multilingualism 提倡国际视野
- Celebrating Diversity while Promoting Unity 培养独特性的同时发展多校性
- Celebrating Host Country Language and Culture 感恩中国文化和语言
- Targeting Individual Learning Needs 注重个人需求
- Caring Supportive Environment 关心发展环境



# Some Positive Changes to Look Forward to...

## 值得期待的改变

- SPACE!!! 空间！！！！
- World Class Theater and Black Box 一流的表演舞台和“黑盒子”
- Swimming Pool 游泳池
- Two Full-sized 7-a-side Soccer Pitches 2个7人制的足球场
- 3-4 Full-sized Basketball and Volleyball Courts 3-4个篮球场和排球场
- Design and Innovation Centers 设计和创新中心
- Purpose-built Facilities 以目的来设计的设施
- Expansion to Medium-sized school (more academic, arts, and athletics programs) 更多的课程设置
- Targeting Individual Learning Needs 专注个人学习培养
- Caring Supportive Environment 关心发展环境
- Canal Boating! 划船！
- Purposeful Divisions and Orientation 分区块运作
- View of Mountains and Canals, not Star Wars Building 抬眼可见青山绿水，而不是星球大战里的房子
- SPACE!!! 空间！！！！



# ARRANGEMENT OF CLASSROOMS





**Building Layout**

# The 21<sup>st</sup> C Learner is . . .







- **FLOW and BREAKOUT SPACE**
- 流动性又有区隔的空间





# DESIGN CENTERS

## 设计中心









- ATTRACTIVE MULTIPURPOSE  
ENTRANCE HALLS and FOYERS

• 吸引人眼球的多功能活动区域







Attractive Gardens and  
Outdoor Inquiry Spaces...  
Butterfly Garden?  
公园，活动场地，蝴蝶园？





600-650 Seat Theater 600-650人的剧院





# Black Box Theater Connected to Exhibition Hall

## 黑盒子剧院以为会展中心

---







Swimming Pool 6-Lanes 25m 6道25米的游泳池







Open Cafeteria 开放的餐厅





# Purpose Built Libraries

## 图书馆





Connecting Café 咖啡厅



# Purpose-Built Breakout Learning and Common Areas

## 学生的学习空间

---







Early Childhood



Schools



School-Age Playgrounds



Fitness & Wellness

Outdoor Playgrounds  
and Fitness Circuit  
户外的活动空间



# The Brief...

## General 总述

Design for 1300 Students (4-5 Classes per Grade Level) 设计为各学生，每个年级4-5个班

Merge International w/ Traditional and Modern China Features 融合国际和传统与现代的中国元素

25 Meter Swimming Pool 25米的泳池

Attractive Outdoor Gardens 漂亮的户外活动场地

Community Area and Café 共用的活动空间和咖啡厅

Separate ECE Facility 独立的幼儿园设施

Gyms and Libraries for Upper School, Lower School and ECE with Strategic Views 体育馆和图书馆分别为高年级和低年级使用

400 seat Blackbox Theater and Performing Arts Center 400座的黑盒子和艺术展示厅

600-650 Seat Theater 600-650座的剧院

Large Main Campus and Separate ECE Cafeterias 独立的主校区和分开的幼儿园

100x60 Meter pitch (allows two 45x60 Meter 7-a-side pitches inside) 100\*60的足球场，可容纳2个45\*60的7人制的足球赛

Purposeful Designs of Learning Spaces Based on Ages of Students 专门设计的学习空间

Strong Consideration for Environmental Planning, Energy Efficiencies and Sufficient Safe Indoor Space on Rainy/Poor AQ Days 专门为了环境设计，安全的室内场，全面的空气净化设备

One Drop-Off Point for Transportation 一个接送车下车点



# The Brief...

## Early Childhood Center (ECE)

- Very Large 110m2 Classrooms to Support Inquiry Centers Inside Classrooms
- 110平方米的大型教室
- Early Childhood Literacy Library
- 专门的图书馆
- Inquiry Garden, Indoor and Outdoor Playground Areas Designed for Children 2-5 Years Old
- 专门的游乐设施
- Large Rhythm and Movement/Gym/Assembly Space
- 大型体育空间
- Separate Access from Main Campus
- 可以直接通往主校区
- Joined by Chinese Garden to Main Campus
- 与主校区的中式公园相连接
- ECE Cafeteria
- ECE餐厅



# The Brief...

## Lower School (Grades 1-5)

- Large 85m<sup>2</sup> Classrooms to Support Inquiry Centers Inside Classrooms
- 85平米的教室
- Large Library for Reading, Investigation, Collaboration, and Study
- 大型图书馆
- Outdoor Playground Areas Designed for Children 5-12 Years Old
- 5-12岁的户外运动场
- Large Gym that can Accommodate at least One Volleyball/Basketball Competition Court
- 大型体育馆可以进行排球/篮球比赛
- STEAM (Science, Technology, Engineering, Arts, and Mathematics) Center
- STEAM中心
- Grade Level Classrooms Together with Common Space for Breakout Learning
- 同个年级在一起



# The Brief...

## Upper School (Grades 6-12)

- Large Upper School Library for Archives, Research and Collaboration (ARC) and attached to Common Café
- 大型图书馆和咖啡厅
- Some Smaller 45m2 Classrooms for World Languages and other Specialists
- 45平方米的教室
- Large Gym that can Accommodate at least Two Volleyball/Basketball Competition Courts
- 大型体育馆可同时进行2场比赛
- Design Center for Technology, Creativity and Innovation
- 专门的设计中心
- Common Spaces outside of Classrooms for Breakout Learning and Socializing during, between and after Classes
- 以学科为主的学习中心
- Fitness Center
- 健身中心

## Middle School (Grades 6-8)

- Large 85m2 Classrooms Grouped by Grade Level for Math, English, Science and Social Studies
- 85平方米的教室以科目来排布位置
- Outdoor Area Designed for Children 12-15 Years Old
- 为12-15岁学生设计的户外场地

## High School (Grades 9-12)

- Classrooms Organized by Department
- 以学科为中心
- Accessible Laboratories, Design Center, and Music Rooms
- 实验室，设计中心，音乐中心





**Some days you're the windshield**



**Some days you're the bug**

What Does the Design Look Like?

---



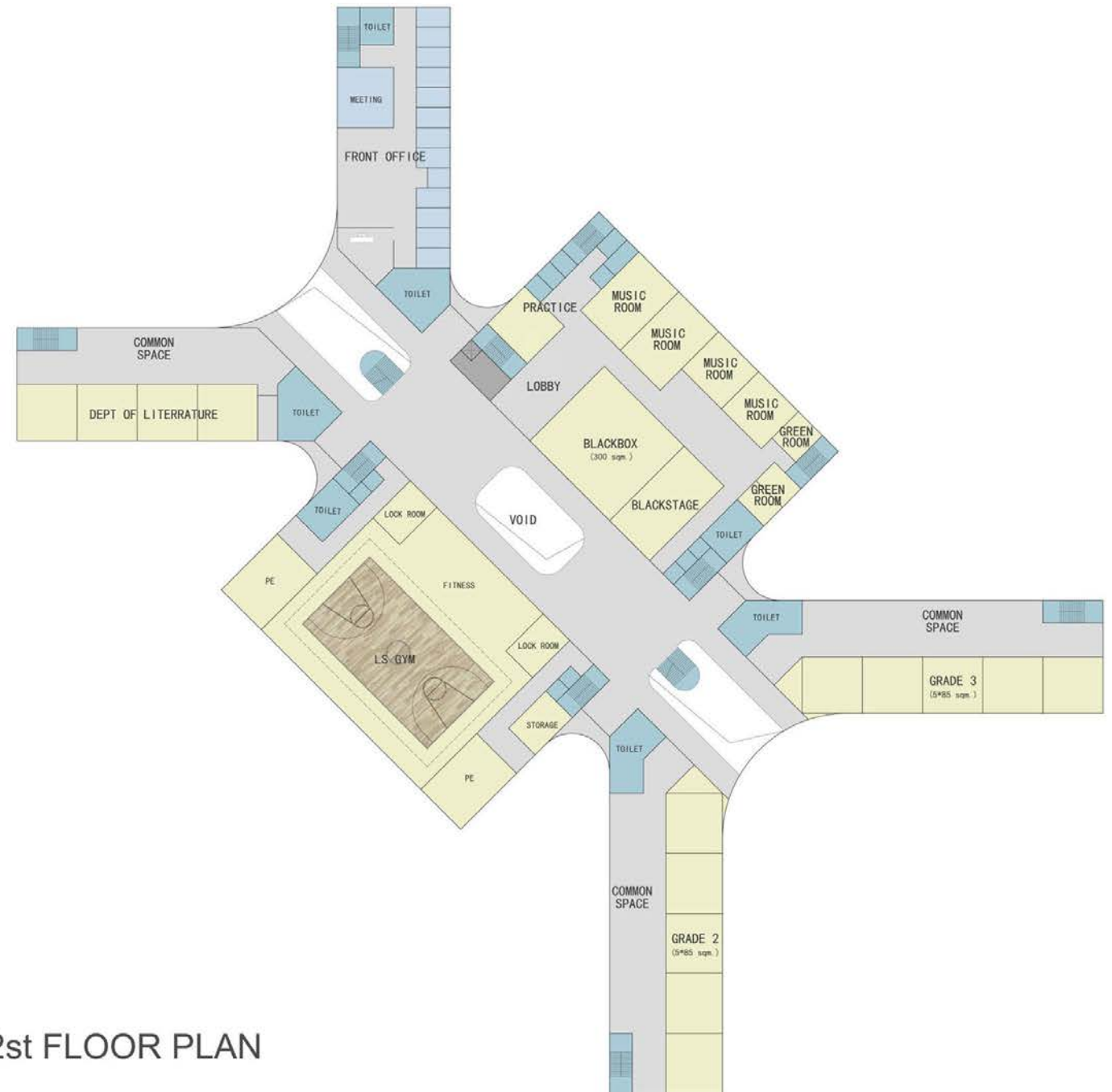




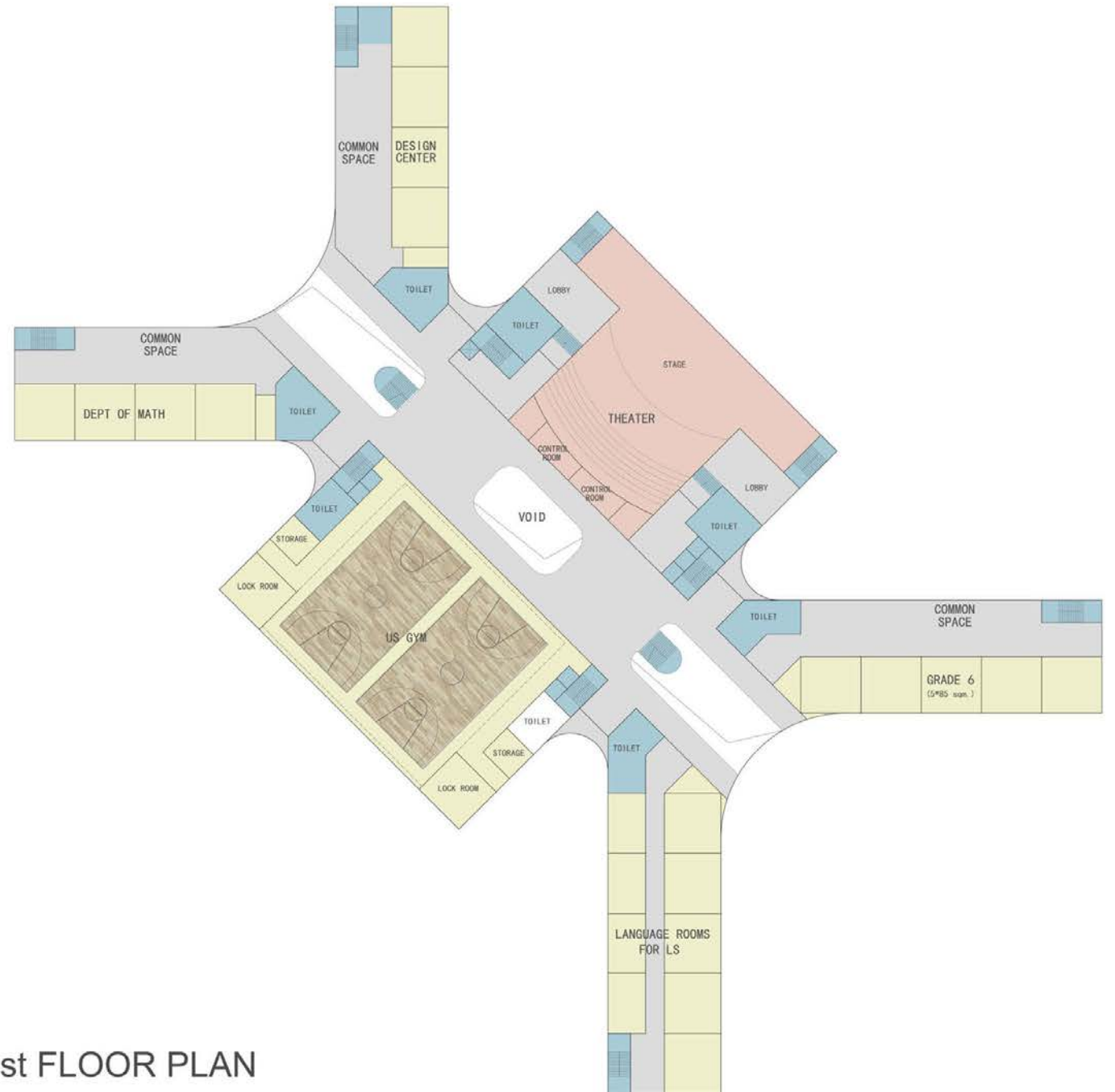


ECE 2st FLOOR PLAN





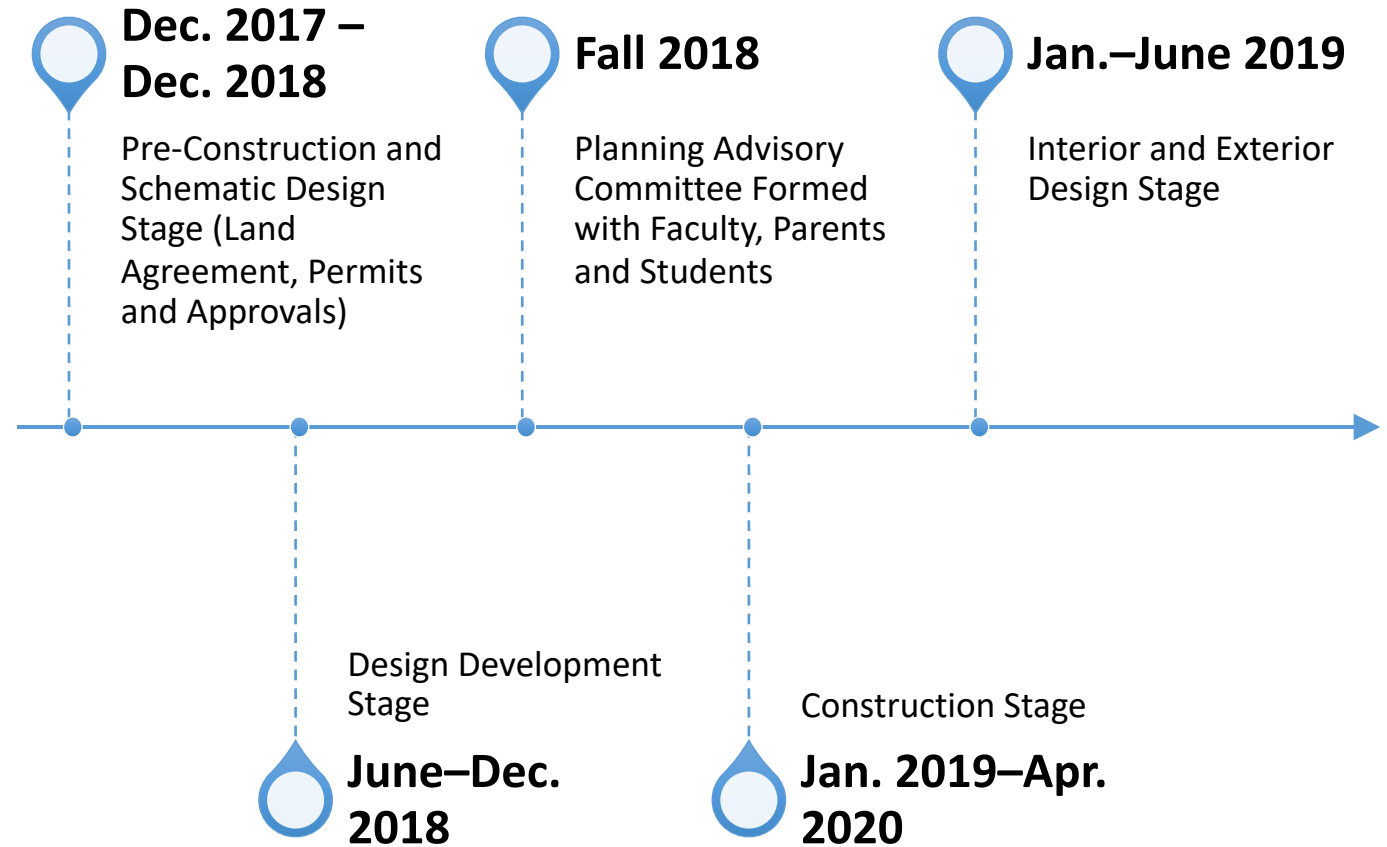
2st FLOOR PLAN

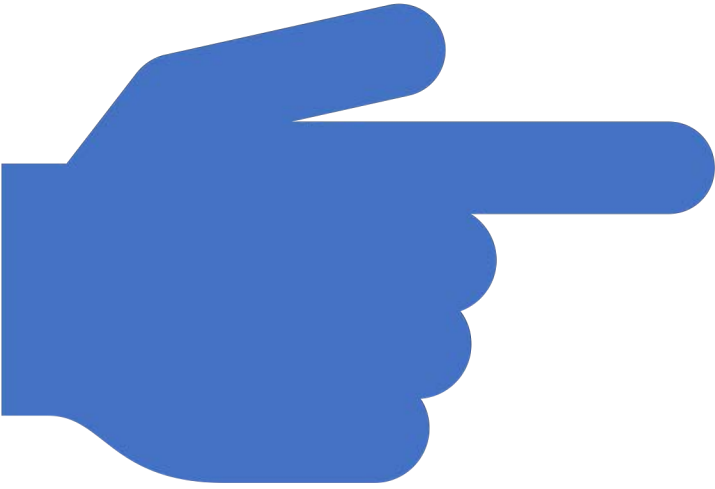


4st FLOOR PLAN



# Timelines and Stages





# Answers before Questions...

- Local Design Firm and International Group Oversight
- Tuition will NOT be Increased More than Past (3-8%) and Most Fees Remain Consistent
- The Construction will Commence as soon as Possible (planned timeline is 16-18 months)
- We will be Hosting Several Events on New Site with Students, Faculty and Parents
- There will be Significant Attention on the Emotions of Transition
- Yes, We will Still Host Welcome Back BBQs, WESTLAKE MUN, Halloween Parade, International Day and Fun Run Events
- Yes, We will Expand Transportation Services to the New Campus
- Yes, there are Major Housing Developments at Various Costs Going Up in the Area
- Until we can Safely Move, We will Continue Improving Current Campus for Learning and Aesthetics





Thank you...  
Questions???

